



PRODUCT CATALOG

PHARMACEUTICAL SECTOR



ABOUT TAAWON GROUP

Welcome to Taawon Group – Your Premier Partner in Laboratory Solutions!

At Taawon Group, we specialize in providing an unparalleled range of high-end laboratory and industrial equipment, disposables, and chemical products. Our commitment revolves around delivering excellence, compatibility, and exceptional value and support.

Discover a world of reliable solutions tailored to elevate your laboratory experience. Taawon Group is here to redefine standards and exceed expectations in the pursuit of scientific excellence.



OUR VISION

To be the leading partner in advancing laboratory and industrial technologies across the region, recognized for empowering innovation with a comprehensive range of reliable, cutting-edge systems and solutions.

OUR MISSION

Our mission is to empower our customers' success by delivering superior-quality laboratory and industrial equipment, with high customer satisfaction rate, enabling measurable improvements in their operational performance each year



TAAWON GROUP JOURNEY

Since its establishment, Taawon Group has grown from a local supplier into a trusted regional leader in laboratory and scientific equipment. Over the years, we have expanded our portfolio, forged global partnerships, and introduced pioneering technologies to the Middle East market. Today, our legacy is built on decades of expertise, innovation, and unwavering commitment to customer success.



2008

**Taawon Founded
in Jordan**



2009

**Diamond Spectrum
Founded in Saudi Arabia**



2013

**Altayf Althahabi (TTSL)
Founded in UAE**



2019

**Companies incorporated
under Taawon Group**



2021

**Diamond Spectrum
Founded in Bahrain**

ASSOCIATION & GROUP COMPANIES

Taawon
Jordan

Diamond Spectrum - DS
Saudi Arabia

Altayf Althahabi - TTSL
United Arab Emirates

Diamond Spectrum - DS
Bahrain



4000 + customers



100 + employees






4 countries



7 offices



-  Offices & operations
-  Extended operations
-  Future expansion

APPLICATIONS & INDUSTRIES

Taawon Group offers a comprehensive portfolio of laboratory, industrial, and scientific solutions designed to meet the highest industry standards and regulations in a wide variety of sectors.



Pharmaceuticals



Energy & Petrochemicals



Chemicals



Food, Beverage & Feed



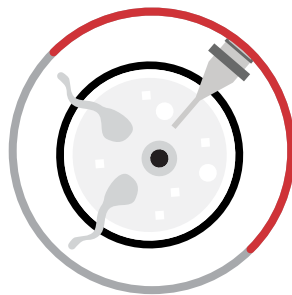
Academia & Research



Nano technology



Material Testing



IVF and Life Science



Warehouse Monitoring

TABLE OF CONTENT

Laboratory Balances	1
Mettler Toledo Analytical Balances	2
Mettler Toledo Precision Balances and Scales	5
Mettler Toledo Microbalances	6
Mettler Toledo Moisture Analysis Solutions	7
Mass Comparators	8
Mettler Toledo Test Weights	10
Mettler Toledo Software for Laboratory Weighing	11
Industrial Scales	13
Mettler Toledo Bench Scales and Portable Scales	14
Mettler Toledo Industrial Floor Scales & Heavy-Duty Scales	15
Mettler Toledo Platform Scales	16
Mettler Toledo Explosion-Proof & Hazardous Area Weighing Scales	17
Mettler Toledo Weigh Modules, Load Cells, Load Sensors	18
Mettler Toledo Scale Driver / Software	19
Analytical Instruments	20
Mettler Toledo Titration Solutions	21
Mettler Toledo Portable pH Instruments	22
Mettler Toledo Benchtop pH Instruments	23
Mettler Toledo Portable Density Measurements	24
Mettler Toledo Benchtop Density Measurements	24
Mettler Toledo UV/Vis Spectrophotometry	25
Mettler Toledo Portable Refractometer / Brix Meter	26
Mettler Toledo Benchtop Refractometer / Brix Meter	26
Mettler Toledo Melting Point Instruments	27
Mettler Toledo Dropping / Softening Point Instruments	28
Mettler Toledo Thermal Analysis Excellence	29
Mettler Toledo Laboratory Software Solutions	31
C-Therm Thermal Conductivity	32
Chromatography Systems	34
Shimadzu Liquid Chromatography	35
Shimadzu Gas Chromatography	37
Shimadzu Columns, Reagents and Consumables	38
Software & Informatics	40
Shimadzu Software & Informatics	41

TABLE OF CONTENT

Spectrometry Solutions	43
Shimadzu Liquid Chromatograph-Mass Spectrometry	44
Shimadzu Gas Chromatograph-Mass Spectrometry	46
Shimadzu MALDI-Based Instruments and Solutions	48
Shimadzu Molecular Spectroscopy	50
Shimadzu Elemental Analysis	51
Automated Lab Reactors In-Situ Analysis, & Modeling Software	53
Mettler Toledo Instruments for Chemical Synthesis, and R&D	54
Liquid Handling Solutions	56
Mettler Toledo Pipettes	57
Mettler Toledo Pipette Tips	58
Mettler Toledo Semi-Automated Pipetting Systems	59
Mettler Toledo Pipette Management	60
Microbiology Lab Solutions	61
Fedegari Sterilizers and Washers	62
Binder Incubation and Plant Growth	65
Binder ULT STORAGE	66
Integra Media Preparation and Filling	68
Integra Aspiration Systems	69
Integra Microplate Dispenser	70
Integra Peristaltic Pump	70
IUL Sample Preparation	72
Testing Instruments	73
Pharma Test Galenic Instruments	74
Pharma Test Dissolution Testing	76
Pharmag Pilot Plant and small scale production	79
Rigaku Portable Material Identification	81
SureTorque Cap Testing	83
Homogenizers & Pressure Control	84
Avestin High Pressure Homogenizers	85
Operational Environment Monitoring Systems	88
Rotronic Monitoring and Measurements	89
Rotronic Monitoring System (RMS)	91
PMS Contamination Monitors	93
PGC Walk-In Stability	96

TABLE OF CONTENT

Operational Environment Control Systems	98
Binder Standard incubation and Plant Growth	99
Binder Drying and Tempering	100
Binder Environmental Simulation	101
Binder ULT Storage	102
Bioquell Risk Reduction Solutions	104
Bioquell Consumables & Related Accessories	107
Operational Environment Validation Systems	108
Kaye Thermal Validation Systems	109
Kaye Thermal Calibration Systems	110
ATI Photometers and Accessories	112
Atomic Spectroscopy	113
Horiba Particle Analysis	114
Horiba Microscopy and Imaging	116
Horiba Spectroscopy	117
Electron & X-ray Microscopy Solutions	118
Tescan Scanning Electron Microscopes (SEM)	119
Tescan Focused Ion Beam-Scanning Electron Microscopes (FIB-SEM)	121
Materials Testing Systems	122
Instron Universal Testing Systems	123
Chemicals & Consumables	125
Life Sciences	126
Chemicals	128
Optical Imaging	129
Microscopes	130



METTLER TOLEDO

Laboratory Balances

Laboratory Balances

Analytical Balances

XPR Balances

- The XPR series spans from ultra-micro to high-capacity precision, covering capacities from as low as a few grams up to 64 kg.
- Micro-analytical models feature readabilities down to 0.0001 mg with typical repeatability of 0.00015 mg at 5 % load.
- Analytical models (e.g. XPR106DUH, XPR205) achieve readabilities of 0.005 mg to 0.01 mg with minimum weights ($k=2$, $U=1\%$) starting from ~0.6 mg.
- Integrated quality assurance functions like GWP Approved, StatusLight, and LevelControl actively monitor weighing conditions and enforce process tolerances.
- StaticDetect detects electrostatic charge on sample or container and issues warnings, and can be paired with ionizing modules to eliminate static effects.



XPR Essential Balances

- XPR Essential balances offer connectivity via Ethernet, 3 × USB-A, and USB-B ports for flexible data handling.
- The analytical models include a 7-inch color touchscreen (glove-compatible) for intuitive control and input.
- They feature motorized draft-shield doors that open with one touch to streamline sample access.
- Built-in quality assurance includes StatusLight, LevelControl, and MinWeigh warning to enforce process boundaries.
- Analytical versions use a hanging weighing pan with high-performance load cell for precise weighing of small samples.



Laboratory Balances

Analytical Balances

MX Balances

- MX balances feature the SmartPan weighing pan that reduces air-draft effects and accelerates stabilization.
- They include FACT (Fully Automatic Calibration Technology) for internal self-adjustment to maintain accuracy over environmental changes.
- MX models offer connectivity via USB, Ethernet, and optional Bluetooth for data transfer and system integration.
- Quality assurance tools such as StatusLight, routine test guidance, and user management support compliance workflows.
- Precision variants can deliver readabilities down to 0.01 mg, making them suitable for demanding analytical applications.



MR Balances

- MA balances cover a weighing range from 50 g up to 5 kg with readabilities as fine as 0.00001 g
- They employ a MonoBloc™ load cell and internal automatic weight adjustment for sustained high precision
- Touch control interface with guided menus and automatic calculations streamline routine weighing tasks
- Strong metal base and durable outer housing provide chemical resistance and ease of cleaning
- Communication options include USB-A and RS232, along with passcode protection to guard settings against unauthorized changes



Laboratory Balances

Analytical Balances

MA Balances

- MA balances support capacities from 50 g up to 5 kg with readabilities as fine as 0.00001 g
- They employ a MonoBloc™ weighing cell for reliable measurement stability
- The user interface offers built-in applications and automatic calculations to streamline weighing workflows
- The housing is constructed with a strong metal base and chemical-resistant outer shell to withstand harsh lab conditions
- Communication is enabled via USB-A and RS232 interfaces, with password protection to secure configuration settings



LA Balances

- LA balances provide readabilities down to 0.0001 g with capacities from 80 g to 4 kg
- They use a precise electromagnetic force compensation (EMFC) load cell for fast and stable weighing
- Built-in functions include dynamic weighing and piece counting to simplify common workflows
- The balances offer RS232 communication for printer, secondary display, or PC interface
- They incorporate metal base construction, overload protection, and setting locks to ensure durability and process integrity



Laboratory Balances

Precision Balances and Scales

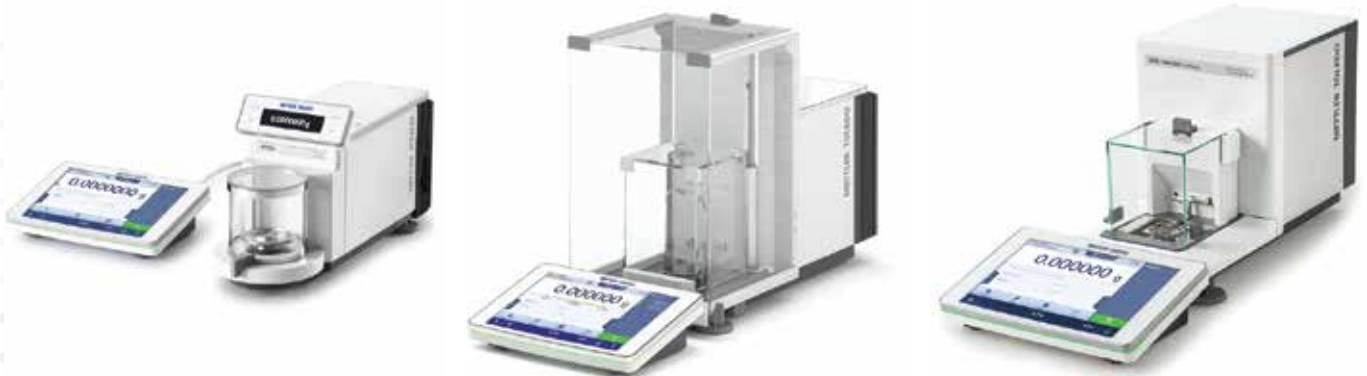
- Precision balances support capacities from 120 g up to 64 kg and readabilities between 1 g and 0.1 mg
- Lower-readability models incorporate draft shields while high-capacity models use large weighing pans to accommodate bulk loads
- The SmartPan / SmartPan Pro weighing pan reduces air-draft influence, doubling speed and improving repeatability
- Connectivity options include RS232, USB, and LAN interfaces, with optional Bluetooth/WLAN support
- Construction features include metal housings, overload protection, smooth surfaces, and rounded edges for durability and ease of cleaning
- Many models offer built-in weighing applications (e.g. formulation, dynamic weighing, piece counting) to streamline processes
- Precision balances may include LevelControl which issues warnings when the balance is not properly leveled
- The MinWeigh function ensures sample weights below the minimum accuracy threshold are flagged (displayed in red) and not released
- Some balances support glove mode for operation while wearing disposable or reuseable gloves
- Capacities above 10 kg are supported by large platform models with 0-3 decimal place readability suitable for heavy and bulky items



Laboratory Balances

Microbalances

- Capacity up to 52 g with readability down to 0.1 µg, enabling measurement of samples as low as 30 µg
- High-performance weighing cells with exceptional repeatability and low minimum weight capability
- Built-in quality assurance via Tolerance Profiles and audit-proof monitoring of weighing status
- SmartView terminal design allows separation of the display from the weighing chamber for ergonomic placement
- Draft shield is cylindrical with all-round visibility and automatic (touchless) door operation
- Compact footprint minimizes space usage and supports installation in confined environments
- Intuitive touchscreen interface with guided method library and easy operation for repetitive tasks
- Internal results notepad automatically records all measurement parameters and results
- Easy removal and cleaning of draft shield components and weighing pan without tools
- Optional electrostatic ionizer modules and StaticDetect support detection and mitigation of sample charging



Laboratory Balances

Moisture Analysis Solutions

- Moisture analyzers use the loss on drying (thermogravimetric) method, combining a balance and halogen heating unit for moisture measurement.
- These analyzers deliver rapid and precise moisture content determination through advanced weighing technology and precise temperature control.
- The QuickPredict feature enables prediction of final results early, reducing measurement time for certain models.
- Connectivity is enabled via USB, Ethernet, and RS232 interfaces, supporting data transfer and integration into lab systems.
- Routine checks are simplified via SmartCal, a quick 10-minute performance test to verify overall instrument function.
- The Method Wizard assists in creating custom drying methods directly on the instrument for reproducible protocols.
- Multiple instruments (up to five) can be managed via EasyDirect™ Moisture PC software, centralizing data for visualization and storage.
- ID management supports sample tracking via barcode reader integration for some analyzer models.
- Robust construction with durable housing allows operation even under harsher industrial or laboratory conditions.
- User management and auto-lock features enforce method control and compliance in user workflows.



Laboratory Balances

Mass Comparators

Vacuum Mass Comparator

- Vacuum mass comparators perform mass determination under vacuum or constant pressure to eliminate buoyancy effects.
- They achieve nanogram resolution, enabling detection of extremely small mass differences.
- The internal vacuum chamber isolates the test and reference weights from ambient air influences.
- These instruments are designed for use by national metrology institutes and high-precision laboratories.
- They support direct comparison of test weights to reference artefacts under identical measurement conditions.



Robotic Mass Comparators

- Robotic comparators automate mass calibration across a range from 0.05 mg up to 20 kg.
- They utilize multi-axis robotic arms and magazines capable of handling up to 100 weights.
- The weighing balance is structurally isolated from the robot to eliminate vibration transfer.
- Integrated software applies air buoyancy correction using environmental sensor data.
- Full automation removes human influence, reducing placement errors and operator variability.



Laboratory Balances

Mass Comparators

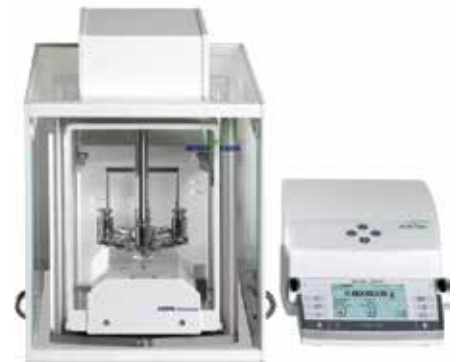
Manual Mass Comparators

- Manual mass comparators allow direct comparison of test weights against reference standards for calibration and verification.
- They provide readability down to 0.001 mg (1 μ g) with excellent repeatability in differential weighing (ABA) mode.
- Models such as the AX106 support a capacity of 111 g with 1 μ g readability and 3 μ g repeatability at 100 g.
- Features include motorized draft shields and hanging weighing pans to minimize environmental effects and eccentricity errors.
- The weighing cell is mechanically isolated from heat-sensitive components to reduce thermal influence and improve stability.



Automated Mass Comparators

- Automated comparators carry out fully automated mass calibration to deliver very low measurement uncertainty.
- They support high capacities up to 64 kg while maintaining ultra-fine resolution down to 0.1 μ g.
- Automated systems enable continuous unattended operation, increasing throughput and reducing human error.
- These comparators include secure operation features and full data traceability to maintain calibration integrity.
- Units like the AX16004 use 4-place weight handling mechanisms to automate mass comparison workflows.



Laboratory Balances

Test Weights

- Test weights from 50 µg up to 5 tons cover the full calibration range for balances and scales
- Supplied in OIML and ASTM classes to meet different levels of metrological accuracy
- Available as single weights, weight sets, reference weights, and microgram weights for various application
- Manufactured from stainless steel (austenitic) with corrosion resistance for long-term stability
- Knob weights, wire weights, and sheet weights are offered for fine and micro ranges, some with adjusting cavities
- Weights come with or without calibration certificates, supporting traceability where required
- Heavy-capacity and crane weights include stackable cast iron or stainless steel designs for ton-scale calibration
- Weight sets range from 1 mg up to 5 kg (or more) in various combinations to support stepwise calibration
- Accessories such as tweezers, forks, gloves, and cleaning cloths are provided for proper handling and maintenance
- METTLER TOLEDO's GWP® Recommendation service helps select the correct weight class and value for routine verification tasks



Laboratory Balances

Software for Laboratory Weighing



Laboratory Balances

Software for Laboratory Weighing

LabX Balance Software

- LabX Balance enables centralized control of instruments, tasks, and users across a network
- SOP guidance is displayed directly on the balance terminal to enforce correct procedures
- Automatic data transfer eliminates manual transcription by sending results directly into the LabX database
- Users can define differential weighing sequences and templates to match regulatory and process requirements
- LabX supports audit-proof user management, electronic signatures, and traceable workflows



EasyDirect Balance Software

- Collects weighing data from up to 10 balances via RS232 or Ethernet.
- Records results automatically in the background for continuous logging.
- Exports data in CSV, XLSX, XML, or PDF formats.
- Provides control charts and statistical analysis for trend monitoring.
- Includes access protection to secure results and instrument settings.



Moisture Analyzer Software

- Connects up to 5 moisture analyzers in one database.
- Transfers data via USB, Ethernet, RS232.
- Supports OneClick method launch with user guidance.
- QuickPredict speeds up moisture results.
- Enables sample ID tracking with barcode support.





METTLER TOLEDO

Industrial Scales

Industrial Scales

Bench Scales and Portable Scales

- Bench scales are engineered for industrial applications such as mixing, counting, checkweighing, and general weighing, ensuring accuracy in diverse workflows.
- They cover a wide capacity range from 61 g up to 1,000 kg, making them suitable for both light precision tasks and heavy-duty operations.
- High-precision models with readability down to 0.1 g provide accurate portioning, formulation, and piece counting in demanding environments.
- Hygienic designs with stainless-steel construction and smooth surfaces allow easy cleaning and reduce the risk of contamination in food or wet areas.
- Configurations with remote displays or terminals improve ergonomics and safety by separating the user interface from the weighing platform.
- The Industrial Basic line delivers rugged, cost-effective solutions for routine weighing tasks without compromising reliability.
- Advanced features such as SpeedWeigh or Anticipation Mode enhance weighing speed and efficiency by dynamically adjusting performance.
- Models equipped with ColorWeight indicators give clear visual feedback on whether values are under, within, or over target limits.
- Portable bench scales provide mobility and flexibility, allowing operators to use them in multiple locations or workstations.
- Special designs for dry and dusty industrial areas ensure long-term durability and consistent performance in harsh conditions.



Industrial Scales

Industrial Floor Scales & Heavy-Duty Scales

- Heavy-duty floor scales are designed to handle large bulk loads ranging from 300 kg up to 12,000 kg, making them suitable for the most demanding industrial weighing tasks.
- Engineered for rugged performance in logistics, manufacturing, and warehouse operations, they provide reliable results even under harsh working conditions.
- They are available in hygienic stainless-steel versions, portable configurations, and fixed installations, allowing customization for different environments and industry requirements.
- Advanced POWERCELL® technology with built-in condition monitoring helps detect overloads, shocks, and temperature variations, ensuring consistent accuracy and reduced downtime.
- Specially customized constructions can be manufactured to meet unique process demands, including oversized platforms and specialized applications.
- Floor scales can be equipped with ramps to allow forklifts, pallet jacks, or trolleys to load and unload easily without requiring costly pit installations.
- Ultra low-profile models minimize the scale height, simplifying the movement of heavy or bulky goods onto the weighing platform.
- Portable floor scale options include ramps that fold into a transport position, enabling quick relocation and flexible use across multiple sites.
- Modular versions support capacities up to 6,000 kg with precise readability, enabling accurate measurement of large loads while maintaining throughput.
- Built with sealed load cells and IP-rated junction boxes, these scales withstand wet, dusty, or aggressive industrial conditions for long-term reliability.



Industrial Scales

Platform Scales

- Weighing platforms are built for accurate industrial measurement of materials and items in general environments.
- They offer analog and smart load cell variants to suit different accuracy and connectivity needs.
- The PBD659-B120 model delivers a repeatability (standard deviation) of 0.91 g with a certified readability of 20 g.
- Models like the PBA220-QC60 are designed with platform sizes from 401 mm to 500 mm (15.8 to 19.7 ") suited for medium loads.
- PBA220-QC60 is certified for Legal for Trade (NTEP / OIML) use in dry environments (non-hazardous area) with protection up to IP65.
- Platform scales are designed for non-hazardous areas only, meaning they lack intrinsic explosion-proof or zone approvals
- Some platforms are optimized for dry environment operation, avoiding complexities needed for wet or corrosive settings.
- The scales support standard interface cabling (e.g., 2.5 m cable for PBD659-B120) for signal and power.
- Their mechanical design emphasizes robustness while keeping accuracy across industrial load ranges.
- The platform family bridges simple weighing tasks and smart measurement solutions by combining conventional mechanics with advanced load cell technology.



Industrial Scales

Explosion-Proof & Hazardous Area Weighing Scales

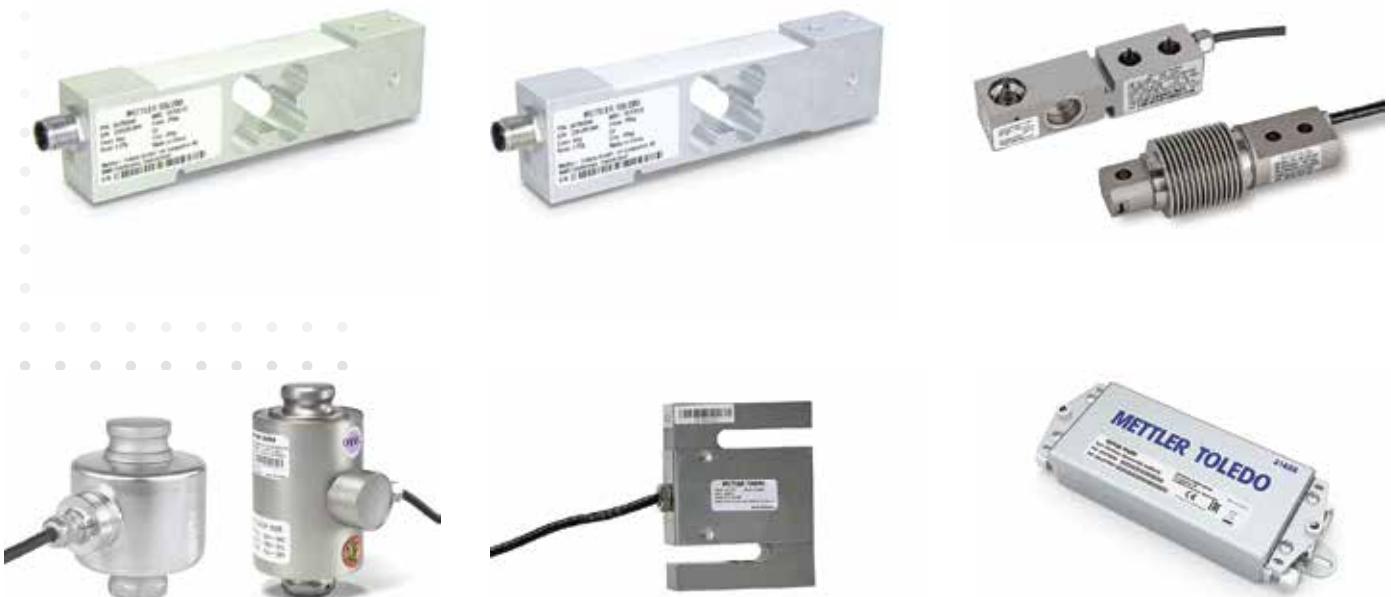
- Hazardous-area weighing solutions are engineered with intrinsically safe and explosion-proof designs for operation in Zones 1/21, 2/22, and Division 1/2.
- The portfolio includes bench scales, floor scales, platform scales, indicators, load cells, weigh modules, rail scales, and truck scales, all certified for hazardous use.
- Indicators feature intrinsic safety certification to ensure safe connection of devices in explosive environments.
- Load cells and weigh modules are built for high linearity, repeatability, and long-term stability under hazardous conditions.
- Floor and platform scales are designed to support standard to heavy load ranges while maintaining explosion-proof compliance.
- Weighing terminals provide operator guidance and process control with safety-approved interfaces.
- Systems are optimized to deliver accuracy and compliance without compromising safety in volatile areas.
- Equipment construction uses durable, sealed housings and IP-rated protection to resist dust, moisture, and contaminants.
- Hazardous-area solutions are designed for simple integration into process automation systems while meeting strict safety standards.
- These systems enable traceable and repeatable weighing operations in industries such as chemical, pharmaceutical, food, and petrochemical sectors.



Industrial Scales

Weigh Modules, Load Cells, Load Sensors

- Load cells and weigh modules are designed to transform tanks, silos, vessels, hoppers, conveyors, and structural elements into precision weighing systems.
- They provide high accuracy and repeatability across a wide range of industrial capacities, from small vessels to hundreds of tons.
- The SWD440 weigh module series supports dual-ended beam load cells with capacities up to 250,000 lb.
- Many models include CalFree™ or CalFree Plus™ electronic calibration, eliminating the need for traditional test weights.
- Digital load cells and weigh modules offer direct data output, enabling fast connection to automation and control systems.
- Compression, tension, and bending beam designs are available to suit different installation and process requirements.
- Modules are engineered for easy integration, with mounting kits that maintain accuracy even under thermal expansion or vibration.
- Hazardous-area approved versions are available with intrinsic safety certifications for explosive environments.
- Constructed with robust stainless steel housings and high IP protection, they provide durability in harsh industrial conditions.
- These solutions ensure traceable, reliable, and safe weighing performance for process industries such as chemical, pharmaceutical, food, and bulk material handling.



Industrial Scales

Scale Driver / Software

Data Management

- The software suite supports reliable collection and monitoring of industrial weighing and process data for traceability.
- The ACI400 IIoT Edge device enables secure, seamless exchange with Cloud, ERP, MES systems while bridging legacy and new weighing devices.
- The "Collect+" module offers real-time data visualization, dashboards, and centralized storage of weight and process metrics.



FreeWeigh.NET Compact for Statistical Quality Control

- FreeWeigh.Net Compact is a PC-based statistical quality control software for real-time monitoring and fine tuning of production processes.
- It collects measurement data, performs statistical calculations, and provides trend analysis for process control.
- The system supports regulatory compliance such as FDA, EU, and GMP/GAMP standards with validation capabilities.



Formulation and Recipe Management

- Ensures precise recipe execution and material dispensing for consistent batch quality.
- Provides automatic data recording and batch traceability for full process documentation.
- Integrates quality checks and material verification at weighing stations to prevent errors.





METTLER TOLEDO

Analytical Instruments

Analytical Instruments

Titration Solutions

Titration Systems

- Control the addition of titrant to determine analyte concentrations by tracking reaction endpoints with high precision
- Modular platforms allow integration with autosamplers, multiple burettes, and sensors to broaden application capabilities



Karl Fischer Titrators

- Specifically designed to measure water content in solids, liquids, and gases using volumetric or coulometric techniques
- Support water determinations from low ppm levels up to 100 % content in samples



High-throughput Titration Systems

- Include carousel autosamplers (e.g. Rondolino) to automate sample throughput for general titration tasks
- Reduce manual intervention and increase consistency across titration processes



Titration Sensors

- Robust electrodes and probes optimized for pH, redox, ion-selective, or conductivity titration endpoints
- Designed for durability and accuracy in diverse sample matrices, ensuring precise endpoint detection



Analytical Instruments

Portable pH Instruments

Seven2Go

- Offers portable measurement of pH, conductivity, dissolved oxygen, and ion concentration in one handheld unit.
- Designed with waterproof/dustproof protection (IP67) and supports storage of up to 200 measurements.
- Features temperature measurement capability with resolution 0.1 °C across range –5 °C to 105 °C.



SevenGo Duo

- Multiparameter, handheld meter supporting pH, conductivity, ion concentration, and dissolved oxygen in one instrument.
- Operates in dual-channel mode, enabling simultaneous measurement of two parameters or samples.
- Engineered for routine field and lab use with ruggedness and ease of operation in varied conditions.



FiveGo

- Portable field meter engineered to measure pH, conductivity, ORP, and dissolved oxygen for water, soil, and food samples.
- Built with IP67 waterproof/dustproof rating and an intuitive menu for quick measurement workflows.
- Offers pH measurement resolution of 0.01 and accuracy of ± 0.01 across the full 0–14 pH range.



Analytical Instruments

Benchtop pH Instruments

SevenDirect

- Benchtop meter that measures pH, ion concentration, and conductivity with built-in GLP support.
- Designed for intuitive operation, featuring automatic sensor recognition and calibration reminders.
- Some models (e.g. SD20) include ORP measurement capability and use a sensor arm (EasyPlace) for consistent probe positioning.



SevenExcellence

- Multi-channel benchtop pH system supporting measurements of pH, conductivity, dissolved oxygen, redox, and ion concentration.
- Enables precise, simultaneous measurements with modular sensor inputs.
- Provides high flexibility for complex analytical workflows through parameter expandability.



NineFocus

- Modular multiparameter benchtop system allowing up to four electrochemical measurements (e.g. pH, redox, conductivity, DO) in one unit.
- Designed to handle ultra-low volume samples with high precision.



FiveEasy

- Benchtop meter engineered for pH/mV or conductivity measurements in routine analytical tasks.
- Compact design intended to provide reliable, accurate performance in a simple and economical format.
- Suitable for laboratories needing straightforward, robust pH or conductivity testing without additional functionalities.



Analytical Instruments

Portable Density Measurements

- Portable density meters use the oscillation tube (U-tube) method to measure liquid density accurately.
- They support derived parameters such as specific gravity, Brix, and concentration, converting density into meaningful units.
- Built-in temperature compensation ensures accurate readings despite sample temperature variation.
- Many models are handheld or pocket-sized, enabling measurement in the lab or field.
- Results precision is high, with three-digit resolution in density measurements.
- They can store hundreds of measurement records, enabling data logging and traceability.
- Bright, backlit displays and intuitive menus aid readability and usability in varied lighting.



Analytical Instruments

Benchtop Density Measurements

- Benchtop density meters use oscillation tube (U-tube) technology to determine liquid density and related metrics.
- They support derived scales such as specific gravity, concentration, and Brix based on the measured density.
- Automatic temperature control (or temperature compensation) is integrated to maintain measurement accuracy across varying thermal conditions.
- These instruments interface with LabX software for workflow control, data storage, and regulatory compliance.
- The "Excellence" line of benchtop density meters is positioned as an all-rounder solution for many sample types with high accuracy.
- Firmware and software features support data handling, method management, and result export in lab environments.
- These meters are engineered for stable operation in laboratory conditions, maintaining repeatability and precision across replicates.



Analytical Instruments

UV/Vis Spectrophotometry

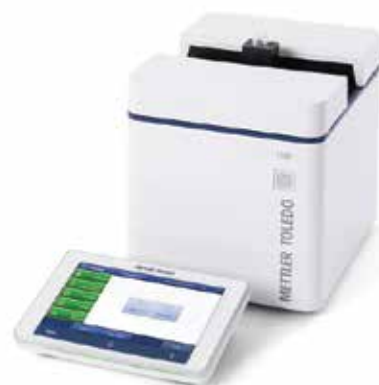
EasyPlus UV/VIS

- Dual-beam optical design with reference detector ensures stable baseline and accurate measurements.
- Uses exchangeable XPathHolder™ cuvette carousels covering multiple path lengths, with PathDetect™ to verify selected path.
- Offers 3-in-1 functionality: spectrophotometry, color measurement (30 built-in color scales), and water analysis.
- Equipped with a xenon flash lamp (in "UV" version) for broadband UV/Vis coverage and long lamp life.
- Wavelength range spans 190 nm to 1,000 nm (for UV model), with wavelength accuracy of ± 1.5 nm and resolution ≤ 0.5 nm.
- SmartLid™ enables automatic start of measurement upon closing, streamlining routine workflows.



UV/VIS Excellence

- Wavelength range from 190 to 1,100 nm, giving broad UV/VIS coverage
- Resolution better than 1.5 (toluene in hexane) with wavelength accuracy ± 1.0 nm and repeatability < 0.15 nm
- Compact size ($\approx 208 \times 255 \times 228$ mm) and weight (~ 6.4 kg) suitable for benchtop use
- Employs FastTrack™ technology (xenon flash lamp and CCD array) for full spectrum scans in about 1 second
- No moving optical parts, enhancing mechanical stability and reducing maintenance
- Complies with pharmacopeia spec (e.g. stray light, photometric accuracy) for regulated environments



Analytical Instruments

Portable Refractometer / Brix Meter

- Measures refractive index and Brix (% w/w) with high resolution and repeatability in field or lab settings.
- Automatic temperature compensation is built in to correct readings based on sample temperature.
- Has a compact, handheld design optimized for portability and ease of use in on-site or at-line measurements.
- Offers predefined calibrations and user methods, allowing quick switch between measurement scales.
- Equipped with data logging memory, capable of storing multiple readings for later review or transfer.
- Supports digital interface connectivity (e.g. USB or similar) for exporting data to PCs or lab systems.



Analytical Instruments

Benchtop Refractometer / Brix Meter

- Uses oscillation-tube (U-tube) technology to determine refractive index and related concentration values.
- Supports derived scales such as Brix, specific gravity, and concentration conversions based on refractive index.
- Offers automatic temperature compensation to correct measurements across varying sample temperatures.
- Designed to provide fast refractive index readings in routine laboratory workflows.
- Compact, space-saving benchtop form factor optimized for routine lab use.
- Integrated software and user interface facilitate method setup, data handling, and repeatable measurement procedures.



Analytical Instruments

Melting Point Instruments

Melting Point

- The MP80 system automatically measures melting, boiling, cloud point, and slip melting point in a single instrument.
- It supports simultaneous measurement of multiple samples (e.g. up to six) to increase throughput.
- The maximum operating temperature of the MP90/MP80 class reaches 400 °C, enabling analysis of high-melting compounds.



Slip Melting Point

- Slip melting point (SMP) refers to the temperature at which a solid (e.g. fat or wax) rises in a tube when the outer surface melts under hydrostatic force.
- The instruments on the METTLER TOLEDO melting point product line support automated slip melting point determination alongside melting, boiling, and cloud point measurements.



Boiling Point

- The MP80 / Excellence systems support automatic boiling point determination as part of their multi-point thermal analysis capability (melting, boiling, cloud, slip).
- Boiling point is measured under controlled heating ramps and detection algorithms to identify the transition temperature consistent with pharmacopeial methods.
- These instruments run parallel measurements on multiple samples, enabling simultaneous boiling point analysis along with other thermal points.



Cloud Point

- Cloud point is one of the thermal transition parameters that the MP80/Excellence melting point systems can measure, along with melting, boiling, and slip melting points.
- In cloud point determination, the instrument monitors light transmittance or turbidity changes as the sample is heated to detect the onset of phase separation.



Analytical Instruments

Dropping / Softening Point Instruments

Melting Point

- Modern systems support fully automated dropping point and softening point tests on one instrument, handling multiple samples without manual intervention.
- The DP70 model can evaluate two samples simultaneously up to a maximum temperature of 400 °C.
- The DP90 variant operates across a broader range (-20 °C to 400 °C), enabling both sub-ambient and high-temperature dropping or softening analyses.
- These instruments use video imaging and digital image analysis to detect the first drop or flow front during heating, providing automation and precision.
- The systems comply with recognized standards such as IP 396 (for grease dropping point tests)
- Performance is optimized for both dropping and softening point determination, giving more flexibility in thermal characterization of substances.



Slip Melting Point

- Softening point determination is integrated with dropping point analysis in the same instrument, allowing simultaneous measurement of both transitions.
- Instruments like the DP70/DP90 can measure softening point over a temperature range up to 400 °C (or down to -20 °C in DP90) for high-temperature materials.
- The softening point is detected by video imaging and digital image analysis, observing the first sign of sample deformation or flow under heating.
- Softening point analysis follows recognized test standards, ensuring compliance with industry thermal testing methods.
- Some systems support parallel analysis of two samples, so softening point can be measured for two specimens simultaneously under identical conditions.



Analytical Instruments

Thermal Analysis Excellence

Differential Scanning Calorimetry (DSC)

- METTLER TOLEDO's thermal analysis line includes DSC systems as one of its core techniques, alongside TGA, TMA, and DMA.
- Their DSC offerings span variants like standard DSC, high-pressure DSC, and ultra-fast (chip) DSC, enabling analysis of materials under different pressures and fast thermal cycles.



Dynamic Mechanical Analysis (DMA)

- DMA characterizes viscoelastic and mechanical properties of materials under oscillatory stress, capturing modulus and damping behavior.
- METTLER TOLEDO's DMA systems offer a wide frequency range (0.001 to 1000 Hz) and support simultaneous thermal measurement (SDTA) for combined analysis.



Hot Stage Microscopy

- Hot-stage microscopy enables visual observation of thermal transitions (e.g. melting, crystallization) while the sample is heated or cooled.
- The HS84 system combines microscopy with simultaneous DSC heat flow measurement, providing complementary thermal and visual data.



Thermogravimetry (TGA)

- Thermogravimetric Analysis (TGA) tracks mass change (loss or gain) of a sample as it experiences controlled temperature, time, and atmosphere variations.
- METTLER TOLEDO's TGA instruments include advanced models such as TGA/DSC 3+ that provide exceptional weighing performance with continuous data acquisition up to 50 million points.



Analytical Instruments

Thermal Analysis Excellence

Fast Scanning Calorimeter

- The Fast Scanning Calorimeter (Flash DSC) supports ultra-high heating and cooling rates, enabling rapid thermal transitions analysis.
- It is capable of measuring under oxygen-free (inert) conditions for precise thermal behavior characterization.



High Pressure Differential Scanning Calorimetry

- High Pressure DSC instruments allow precise control of pressure, atmosphere type, and purge gas flow rates during thermal analysis
- The HP DSC 2+ variant uses advanced sensors (FRS 6+ and HSS 9+) to ensure high performance under elevated pressure conditions



Simultaneous Thermal Analyzer (TGA/DSC)

- Simultaneous TGA/DSC instruments measure mass changes (TGA) and heat flow events (DSC) in a single run, allowing direct correlation of thermal and mass transitions.
- The TGA/DSC 3+ model supports modular sensor configurations (SDTA, DTA, DSC) and built-in gas flow control to analyze samples under defined atmospheres.



Thermomechanical Analysis (TMA)

- TMA (Thermomechanical Analysis) quantifies dimensional changes (expansion, contraction, deformation) of a material as a function of temperature.
- METTLER TOLEDO's TMA/SDTA 2+ system features Swiss precision mechanics and supports extended temperature ranges ($-150\text{ }^{\circ}\text{C}$ to $1,600\text{ }^{\circ}\text{C}$) with variable applied forces (e.g. in DLTMA mode).

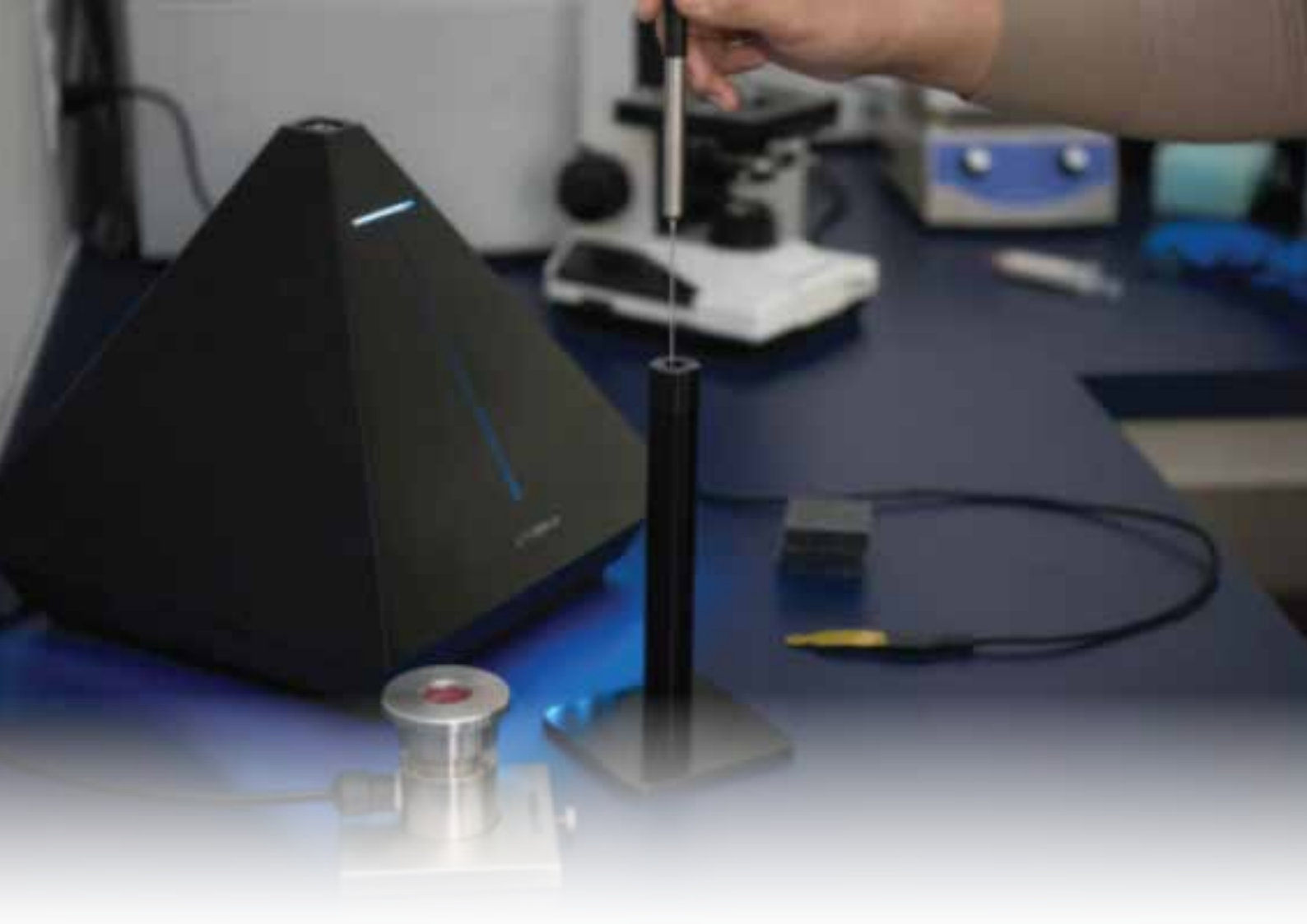


Analytical Instruments

Laboratory Software Solutions

- The Lab Software suite works to centralize control over laboratory instruments, data, workflows, and user roles.
- LabX is a core platform that manages multiple METTLER TOLEDO lab instruments in a unified software environment.
- LabX supports instrument method downloads, result collection, and audit trail generation for regulatory compliance.
- EasyDirect is a simpler software tool focused on automatic data transfer from instruments to a PC to improve data management.
- The lab software solutions are designed to enhance the performance of laboratory instruments by enabling smarter data handling and workflow orchestration.
- These software products support electronic data management, reducing manual entry and transcription errors in the laboratory.
- Lab Software supports central resource allocation and usage monitoring across lab instruments and workstations.
- The platform also underpins laboratory compliance, providing features like audit trails, versioning, and traceable records.





C-THERM
TECHNOLOGIES^{Lt}

Thermal Conductivity

Thermal Conductivity

Trident Thermal Conductivity Instrument

- The Trident instrument supports three transient thermal conductivity measurement methods (MTPS, TLS Needle, and Flex TPS) in a single modular platform.
- Its MTPS sensor is single-sided and provides fast, precise measurements of both thermal conductivity and effusivity with a typical measurement pulse of 1–3 seconds.
- The TLS Needle probe is designed for robust performance with granular, viscous, or paste samples, following ASTM D5334/D5930 standards.
- The Flex TPS configuration uses a double-sided sensor to simultaneously derive thermal conductivity, diffusivity, and specific heat capacity, conforming to ISO 22007-2.
- A Hot Wire (THW) probe is also supported for rapid testing of liquids and powders, operating under the ASTM D7896-19 method.
- Trident supports a wide thermal conductivity measurement range from ~ 0.01 to $500 \text{ W/m}\cdot\text{K}$, covering materials from insulators to metals.
- It includes temperature compensation and a software system that performs data acquisition, analysis, and method control integrated in one interface.
- The system handles a broad temperature operating range from -50°C to $+200^\circ\text{C}$, with optional extension up to 500°C for certain sensors.





 **SHIMADZU**
Excellence in Science

Chromatography Systems

Chromatography Systems

Liquid Chromatography

HPLC/UHPLC/SFC Systems

- Shimadzu offers both integrated and modular HPLC / UHPLC configurations tailored to diverse analytical workflows.
- The Nexera series incorporates AI, IoT, and digital diagnostics for automated performance monitoring and reduced downtime.
- Features such as Flow Pilot and Nexflow enhance pressure stability, control startup flow, and minimize extra-column dispersion.



Preparative HPLC Systems

- Designed for purification and isolation of target compounds after synthesis or extraction with high purity and recovery.
- The product line includes Nexera Prep, Nexera UC Prep, and UFPLC systems optimized for large-scale preparative applications.
- Complementary modules like fraction collectors, flow splitters, and liquid handlers enable flexible, automated workflows.



GPC Systems

- Shimadzu's size exclusion chromatography (SEC) technology separates molecules based on hydrodynamic size.
- Larger molecules elute earlier, while smaller ones penetrate porous beads and elute later.
- Shim-pack SEC columns ensure high precision and reproducibility for polymer and biomolecular analysis.



Ion Chromatograph Systems

- Ion exchange chromatography (IEX) separates analytes by ionic charge differences using cation or anion exchange resins.
- Shim-pack IC and Bio IEX columns are optimized for selective charge-based separations.
- Controlled mobile phase conditions maintain ionic equilibrium, improving reproducibility and peak resolution.



Chromatography Systems

Liquid Chromatography

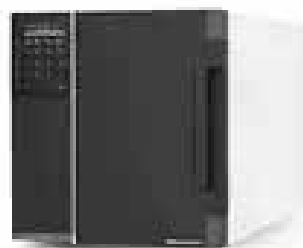
LC Software

- Shimadzu LC systems feature intuitive software platforms for method setup, instrument control, and data management.
- Integrated diagnostics and predictive maintenance functions enable automated issue detection and system recovery.
- Smart automation tools reduce manual intervention and enhance laboratory productivity.



LC Components & Accessories

- Shimadzu LC platforms integrate precision pumps, autosamplers, and detectors for high-stability operation.
- Intelligent hardware functions, such as bubble detection and maintenance alerts, improve reliability and uptime.
- Energy-saving features like automatic standby reduce power consumption by over 95 % during idle operation.



LC Columns

- The Shim-pack series covers reversed phase, normal phase, HILIC, preparative, microscale, SEC, ion exchange, and SFC modes.
- Shim-pack Arata columns deliver superior peak shapes for basic compounds under challenging conditions.
- Shim-pack FC-ODS combines 3 μm particle size with 2 μm -level efficiency, ensuring fast and high-resolution separations.

CoreFocus



LC Consumables

- Consumables include plungers, seals, filters, diaphragms, and check valves for solvent delivery systems.
- Autosampler consumables comprise needle seals, suction filters, septa, and rotor/stator parts.
- Detector consumables include deuterium lamps and flow cells, ensuring consistent optical performance.



Chromatography Systems

Gas Chromatography

GC Systems

- Shimadzu's GC lineup includes models designed for sensitivity, throughput, and modular expandability.
- The systems supports up to three injection units and four detectors simultaneously, enabling multi-channel analytical configurations.
- Systems utilize advanced electronic flow controllers and modular inlet/detector designs to ensure reproducibility, flexibility, and long-term stability.



GC Software

- PONAsolution software integrates with LabSolutions to perform detailed hydrocarbon analysis
- Features include automatic retention index correction (AART), dual line analysis, and unified data handling in a single file for simplified workflows.
- Shimadzu GC drivers for OpenLab CDS allow full instrument control, supporting multiple GC units, injectors, and detectors



GC Columns

- The SH Series GC columns include fused silica, PLOT, stainless steel, and guard columns.
- Available stationary phases include 100 % dimethyl polysiloxane, diphenyl/dimethyl polysiloxane, trifluoropropyl methyl polysiloxane, and polyethylene glycol for various polarity ranges.
- A cross-reference database aligns Shimadzu SH phases with equivalent columns from major manufacturers.



GC Consumables

- Injection port septa are available in multiple materials and temperature ratings, including "Xtra Life" (400 °C) and low-bleed HT versions (up to 450 °C) for extended durability.
- Glass insert liners with or without deactivated wool are supplied for consistent sample vaporization and reduced contamination.
- Precision syringes for both manual and autosampler operation ensure accurate, repeatable sample injection with minimal carryover.



Chromatography Systems

Columns, Reagents and Consumables

Core Focus

- Core Focus represents Shimadzu's central knowledge and application hub within its consumables and reagents portfolio.
- It provides scientific insights, method guidance, and resources that support compound identification and chromatographic optimization.
- Alongside hardware and consumables, it functions as a reference platform enhancing method development and analytical reliability.

CoreFocus



LC Columns

- Shimadzu's Shim-pack series covers multiple separation modes, including reversed phase, normal phase, SFC, SEC, HIC, and ion exchange.
- Available in a variety of particle sizes and chemistries to support applications from small molecules to biopharmaceutical analysis.
- Specialized columns such as Shim-pack Arata and core-shell types deliver enhanced peak shapes, stability, and efficiency under demanding conditions.



LC Consumables

- Includes components for solvent delivery such as plungers, seals, diaphragms, filters, and check valves to maintain pump precision.
- Autosampler consumables include suction filters, needle seals, septa, and rotor/stator assemblies for accurate and leak-free injection.
- Detector consumables like flow cells and lamps ensure long-term stability and consistent signal performance.



LC-MS Consumables

- LC-MS consumables include ESI and APCI interface probes designed for efficient ionization and stable signal transmission.
- Additional items include drain tubes, standard solutions, and rotary pump oil for proper system maintenance.
- Consumable components for the lens section and DL parts are available to maintain optimal sensitivity and ion optics performance.



Chromatography Systems

Columns, Reagents and Consumables

GC Columns

- Shimadzu's SH Series GC columns are available in fused silica, stainless steel, and PLOT designs for versatile analytical use.
 - Stationary phases such as 5 % diphenyl / 95 % dimethyl polysiloxane provide high thermal stability and broad analyte compatibility.
 - SH-5 columns are equivalent to USP phases G27 and G36, allowing seamless method transfer between systems.
-

GC Consumables

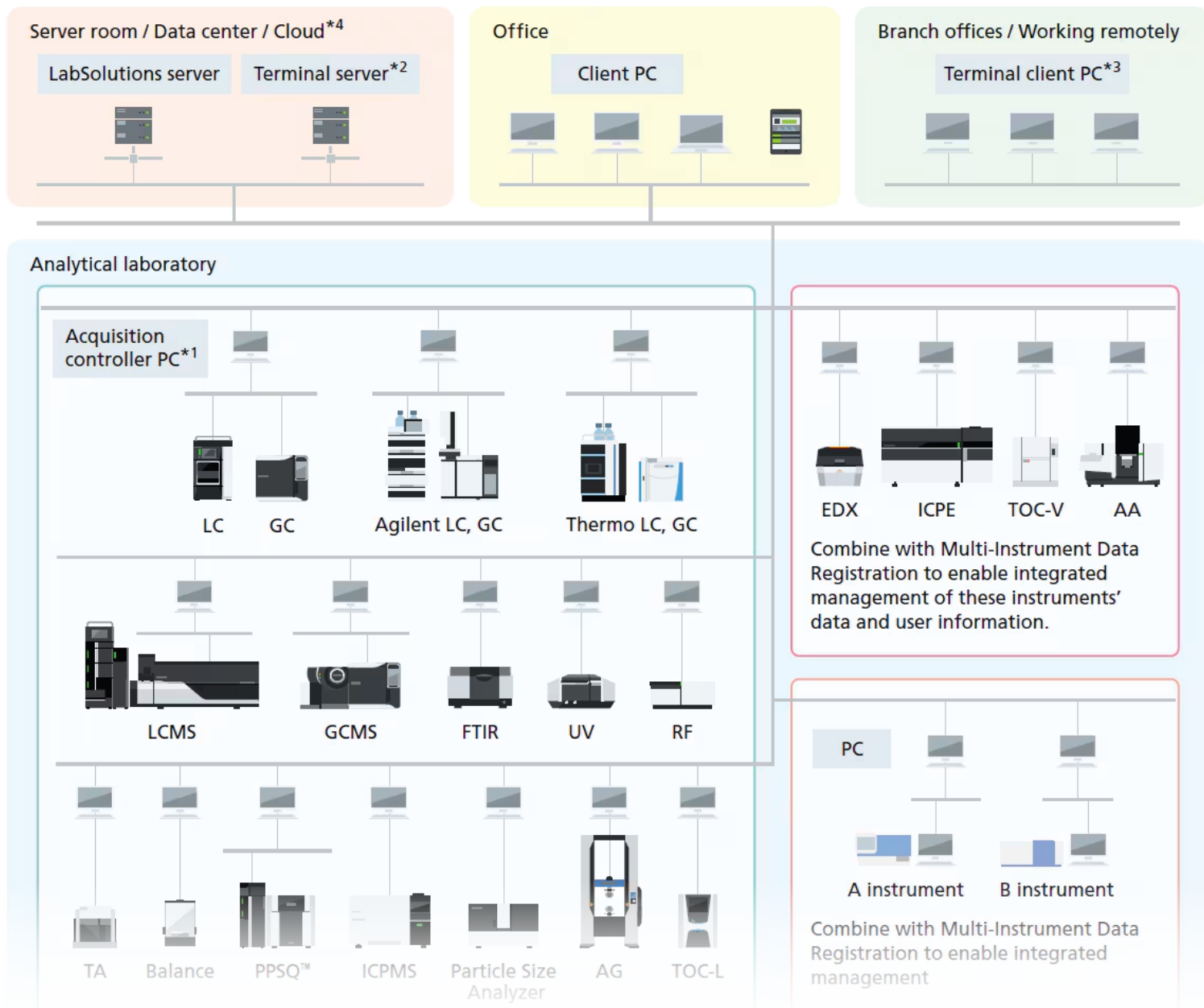
- GC consumables include injection port septa engineered for minimal bleed and high-temperature durability up to 450 °C.
 - Glass insert liners with or without wool are available for capillary, PTV, and packed inlets to ensure consistent sample vaporization.
 - Connectors, nuts, and ferrules such as ClickTek fittings are provided for secure, leak-free column installation.
-

Consumable Parts

- Includes replacement parts such as seals, filters, gaskets, and valves compatible with various Shimadzu instruments.
 - A searchable database allows identification of parts by instrument type or part number for easy ordering.
 - Each consumable part is designed for compatibility, long service life, and stable performance.
-

Vials & Accessories

- Shimadzu offers multiple vial types such as Shim-vial H glass, S glass, LabTotal, and TORAST-H vials.
- LabTotal vials minimize adsorption of basic compounds, ensuring accurate trace-level analysis.
- Accessories include caps, septa, and suction filters designed for secure sealing and sample integrity during automated analysis.



SHIMADZU

Excellence in Science

Software & Informatics

Chromatography Systems

Software & Informatics

LabSolutions™ DB/CS

LabSolutions Series

GC Software

LC Software

- Manages analytical data in a database rather than files, preventing unauthorized renaming, overwriting, or deletion and ensuring audit trails of "who, what, when" are recorded.
 - Offers a "Report Set" function that bundles related analyses, logs, and conditions into one PDF for consistent review/approval workflows.
 - Supports integrated control and data management of Shimadzu and non-Shimadzu LC/GC systems (e.g. Agilent, Thermo) via appropriate drivers.
 - Supports both standalone (DB) and networked (CS) configurations; in CS mode, client PCs (even remote) can perform acquisition, analysis, and report tasks via terminal services without installing full software locally.
-

LabSolutions™ LCGC

LabSolutions Series

LC Software

GC Software

- LabSolutions™ LCGC allows control of both LC and GC instruments from the same software environment, enabling a single PC to operate multiple instruments and switch flexibly between LC and GC modes.
 - It implements a Peak Integration Algorithm capable of highly accurate detection of shoulder peaks and simplifies adjustment of peak-baseline processing.
 - It provides a user interface for direct access to instruments via smart devices ("User interface connecting smart devices to LabSolutions software (Direct)"), facilitating instrument connection control from mobile or external devices.
-

LabSolutions Insight

LC-MS Software

GC-MS Software

LabSolutions Series

- Automatically applies user-defined peak detection criteria and flags deviations across datasets, streamlining review of LC-MS and GC-MS data.
- Compatible with LabSolutions DB/CS to enable traceability, audit trails, user rights, and centralized data management.
- Supports compound grouping (e.g. summation of isomer peaks) and flexible reporting (per sample or per batch) to match various workflows.
- Manages all data-analysis metadata in a single file to produce a clear, understandable audit trail.

Chromatography Systems

Software & Informatics

LabSolutions Sync

Software Options

- Synchronizes third-party software (pretreatment or synthesis control) with LabSolutions batch operations, enabling automatic execution of LC, LC-MS, GC, and GC-MS analyses.
 - Enables monitoring of instrument status via external software by synchronizing LabSolutions status and parameters with third-party systems.
 - Includes an automatic shutdown capability if no acquisition is triggered within a preset time, preventing instruments from running unnecessarily.
 - Supports deployment across laboratory scales, from single instrument stand-alone to large networked systems.
-

LabSolutions Detect

Software Options

LabSolutions Series

LC Software

- Enables alignment of chromatograms via automatic retention time correction to allow direct overlay comparison despite shifts or baseline variation.
 - Automatically clusters similar peaks across datasets to detect common impurities with AI-based matching, reducing manual comparison labor.
 - Generates anomaly (difference) analysis reports with one click, including overlay displays and flagged deviations, without complex parameter setup.
 - Stores all difference analysis results within the LabSolutions database, ensuring integrated management with original data and maintaining data integrity.
-

LabSolutions GCMS

Software & Informatics

LabSolutions Series

GC-MS Software

- LabSolutions DB/CS supports GC-MS data management with regulatory compliance (e.g. electronic records & signatures, ER/ES), preventing overwriting or deletion of analysis data.
- Compatible instruments include GCMS-QP2020 NX, QP2020, QP2010 Ultra, and QP2010 SE for GCMS workflows.
- In CS (networked) mode, multiple systems' GCMS data can be reviewed from any client computer and separated between measurement and analysis tasks.
- In DB (standalone) mode, a single computer connects to the GCMS instrument for acquisition and data management without requiring network infrastructure.



Spectrometry Solutions

Spectrometry Solutions

Liquid Chromatograph-Mass Spectrometry

Triple Quadrupole LC-MS/MS

- Provides ultra-sensitive quantitative analysis for complex matrices such as food, environmental, and biological samples.
- Integrates automated MRM optimization, peak integration intelligence, and column conditioning for consistent results.
- Offers multiple ionization sources (ESI, APCI, DUIS, DPiMS) to cover a wide polarity range.
- Supports microflow operation (1–500 $\mu\text{L}/\text{min}$) using UF-Link zero dead-volume connections for optimal chromatographic performance.



Single Quadrupole LC-MS

- Delivers high-speed, high-sensitivity detection of trace components in pharmaceutical and chemical analysis.
- The LCMS-2050 combines compact design with MS performance and LC detector simplicity.
- Equipped with a dual HESI/APCI ion source to analyze compounds of varying polarity in one run.
- Achieves scan speeds up to 15,000 u/sec with 10 ms polarity switching and a mass range of m/z 2–2000.



Quadrupole Time-of-Flight LC-MS/MS

- Ensures mass accuracy within ± 1 ppm even under fluctuating laboratory temperatures.
- Provides fast, stable polarity switching for simultaneous positive/negative ion detection.
- Includes automatic tuning for calibration of mass accuracy, resolution, and sensitivity.
- Supports multiple acquisition modes (MS, SIM, MS/MS, MRM, DDA, DIA) for flexible qualitative and quantitative workflows.



Spectrometry Solutions

Liquid Chromatograph-Mass Spectrometry

Automated LC-MS/MS

- The CLAM-2040 automates sample extraction, cleanup, and injection for hands-free LC-MS analysis.
- Reduces variability caused by manual handling while increasing analytical throughput.
- Seamlessly integrates sample preparation with LC-MS/MS for a continuous workflow.



LC-MS Components & Accessories

- Includes microflow autosamplers, column ovens, degassers, and solvent delivery modules.
- UF-Link interfaces minimize dead volume to maintain accurate peak shapes.
- Designed for compatibility across microflow to semi-micro flow regimes.



LC Columns

- Shim-pack MC C18 columns (1.9 μm) handle pressures up to 70 MPa for microflow LC/MS.
- Trap columns (C18/C8) enable sample concentration and matrix cleanup under high pressure.
- UF-Link ensures zero dead-volume connections between column and interface to preserve performance.



LC-MS Consumables

- Includes critical flow-path components such as plungers, seals, filters, and check valves.
- Ensures stable solvent delivery and consistent injection precision.
- Supports regular maintenance of pumps, autosamplers, and degassing units.



Spectrometry Solutions

Gas Chromatograph-Mass Spectrometry

Triple Quadrupole GC-MS/MS

- Enables ultra-trace quantitative GC-MS/MS by combining a highly efficient detector and three noise-reduction technologies to reach femtogram-level sensitivity.
- Uses off-axis ion optics, shielded detector, and overdrive lens to reduce noise and improve signal-to-noise ratio.
- Features simplified maintenance via "Active Time Management" and "Easy sTop" functions to assist in ion source, injection port, and continuous analysis scheduling.
- Supports automated method development with Smart MRM and Smart Database, reducing manual tuning of transitions and collision energies.



Single Quadrupole GC-MS

- The GCMS-QP2020 NX employs a differential exhaust turbomolecular pump plus high-performance flow controller to maintain sensitivity under varied conditions.
- Incorporates Smart SIM for simplified method creation and LabSolutions Insight software to accelerate data review.
- Offers robustness and high reliability through hardware and automated functions in routine analysis contexts.
- The GCMS-QP2050 uses a DuraEase ion source to extend uptime, plus contamination-resistant optics to reduce maintenance frequency and allows maintenance in one minute.



GC-MS Components & Accessories

- Provides sample introduction systems tailored to volatile and semi-volatile compound analysis.
- Offers series as accessory modules for enhancing GC-MS capability.
- Supports multiple ionization modes through accessory options for softer or harder ionization approaches.
- Compatible with Shimadzu's GC-MS software and database modules, integrating hardware accessory control with data acquisition and processing.



Spectrometry Solutions

Gas Chromatograph-Mass Spectrometry

Application Specific GC-MS Systems

- Tailors systems to domains such as food safety, environmental analysis, forensic toxicology, aroma analysis, and dioxin monitoring
- Uses pre-registered Smart Databases to accelerate method setup in specialized fields.
- Combines spectral libraries with application databases to support identification in target and non-target workflows.
- Enables rough quantitation without standards via databases that include calibration curves and retention index data for known analytes.



GC Columns

- Shimadzu offers GC columns optimized for volatile and semi-volatile separation, supporting use in their full GC-MS instrument line.
- Column options integrate with accessory modules to permit column switching or alternate flow paths without breaking vacuum.
- Columns are matched to sample introduction systems (HS, pyrolysis, etc.) via accessory compatibility.
- Integrated into system design so injector, oven, and interface modules maintain minimal dead volume and optimal transfer to MS.



GC-MS Consumables

- Consumables include parts such as liners, inserts, septa, filaments, ion source components, and detectors, as implied by consumable part search features on the site.
- Shimadzu lists a consumable parts search function to support ongoing maintenance and replacement in GC-MS systems.
- Consumable kits are bundled with systems to ensure users can maintain the hardware without sourcing parts separately.



Spectrometry Solutions

MALDI-Based Instruments and Solutions

MALDI Benchtop Instruments

- Examples include MALDI-8020 (linear TOF, positive ions, 200 Hz laser, load-lock chamber, automated source cleaning) and MALDI-8030 (dual-polarity linear TOF) in compact footprints.
- Designed for routine, high-throughput workflows with features such as quiet operation (< 55 dB) and fast sample introduction.
- Use of automated or software-guided maintenance (e.g. TrueClean automated source cleaning) to maintain performance over time.



MALDI Floor Standing Instruments

- The AXIMA series offers research-grade MALDI-TOF / TOF mass spectrometers suited for high-energy MS/MS and high mass intact protein analysis.
- Features include precursor ion selection gating, CID (collision induced dissociation) at laboratory-frame energies (e.g. 20 keV), and reflectron mode high resolution operation.
- Designed for flexibility across workflows: supports proteomics, LC-MALDI coupling, biomarker discovery, polymer analysis, and other high-demand use cases.



MALDI Imaging Solutions

- Shimadzu offers MALDI imaging capabilities (i.e. spatially resolved MS) integrated into their instrument portfolio (e.g. with benchtop instruments) for mapping analyte distributions.
- These imaging solutions leverage the same MALDI-TOF basis to support tissue, biomolecule localization, and sample heterogeneity studies.
- Supports software and instrument configurations optimized for imaging throughput and sample alignment.



Spectrometry Solutions

MALDI-Based Instruments and Solutions

MALDI Software Solutions

- SampleStation / AuraSolution: sample worklist creation, automated acquisition, result review, and data traceability in a centralized database (with user login, barcode scanning, and access control).
- MALDI Solutions™ software uses a Microsoft SQL database to store sample lists, acquisition parameters, and acquired data under security constraints (e.g. for regulatory compliance).
- MALDI EasyCare: guided maintenance and tuning (manual cleaning of optics, automated tuning of deflector/detectors) to restore performance, increase uptime, and reduce reliance on engineer service.



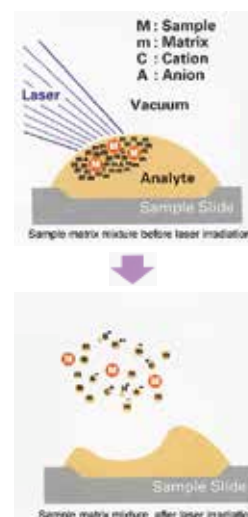
MALDI Consumables

- Consumables include sample targets (e.g. FlexiMass™ slide formats, barcoded single-use polymer slides) to support sample preparation and traceability.
- Consumables are integrated into workflows (e.g. worklist linking sample slide identifiers) to maintain the association between sample and acquired data.
- Components such as ion optics and surfaces are subject to maintenance and replacement via EasyCare processes to sustain instrument performance.



Principle of MALDI

- Samples are mixed uniformly with a matrix; the matrix absorbs UV laser energy, converting it into heat and vaporizing (desorbing) the analyte with minimal fragmentation.
- Ions generated from the desorbed analytes are accelerated by a potential difference into a time-of-flight (TOF) analyzer; ions with lower m/z travel faster, so arrival time differentiates mass/charge.



Spectrometry Solutions

Molecular Spectroscopy

UV-Vis-NIR Spectroscopy

- Measures transmittance, absorbance, or reflectance by irradiating a sample with light.
- Shimadzu's instruments span wide wavelength ranges and include multiple detectors and integrating spheres for high sensitivity in solids and films.
- Features include high scan speed, low stray light, and software support for spectral evaluation and instrument control.



FTIR Spectroscopy

- Uses broadband infrared irradiation and Fourier transformation of interferogram signals to generate absorption spectra
- Shimadzu IRTracer-100 achieves high performance: signal-to-noise ratio of 60,000:1, and rapid scanning at 20 spectra per second.



Fluorescence Spectroscopy

- It features high scanning speed, long-life xenon lamp, and extended-range PMT detector enabling measurement to ~900 nm.
- Software integration (LabSolutions RF) ensures consistent GUI across measurement, analysis, reporting; includes validation tools and sample accessory status tracking.



Raman Spectroscopy

- Shimadzu's AIRsight system combines IR and Raman in one microscope so both spectra can be acquired at the same sample position without moving the sample.
- The AIRsight supports analysis of both organic and inorganic features, uses common software for IR and Raman control, and ensures spatial alignment via shared imaging and stage referencing.



Spectrometry Solutions

Inductively Coupled Plasma Atomic Emission Spectroscopy (ICP-AES / ICP-OES)

- Shimadzu's ICPE-9800 (and related models) uses a CCD detector capturing all wavelengths simultaneously, enabling measurement of both high and low concentration elements in one run.
- A vertical-torch design helps reduce sample adhesion and memory effects, improving measurement stability and washout performance.



Inductively Coupled Plasma Mass Spectrometry (ICP-MS)

- Provides ultra-trace multielement detection (ppt levels) by directly introducing ions into the mass spectrometer for high sensitivity.
- Compared to ICP-AES, offers superior sensitivity but has lower matrix tolerance and greater maintenance demands due to direct ion path.



Application Specific ICP-MS Systems

- Shimadzu offers configured ICP-MS systems optimized for environmental or regulatory applications (e.g. elemental impurity screening) to align with industry workflows.
- These systems aim to reduce operator intervention through optimized hardware and software integration, improving ease-of-use and throughput.



Inductively Coupled Plasma Mass Spectrometry Software

- Shimadzu's software integrates method development tools and supports automated evaluation of results to reduce manual steps.
- The software includes operations for quantitative methods such as calibration curve and fundamental parameter (FP) methods, especially when used in conjunction with XRF alternatives.



Spectrometry Solutions

Elemental Analysis

Atomic Absorption Spectroscopy (AAS)

- Shimadzu's AAS line offers models ranging from basic to fully automated general-purpose instruments.
- The AA-7800 includes safety features (e.g. vibration sensors, gas leak detection) and supports dual-beam optics plus autosampler/network integration.



Energy Dispersive X-ray Fluorescence Spectroscopy (ED-XRF)

- ED-XRF is non-destructive and can analyze solids, powders, and liquids without chemical pretreatment, enabling qualitative and quantitative elemental analysis.
- Shimadzu's lineup includes EDX-7200, EDX-8100, and EDX-LE models offering high sensitivity, speed, and regulatory compliance (RoHS/ELV screening).



Wavelength Dispersive X-ray Fluorescence Spectroscopy (WDXRF)

- Shimadzu positions WDXRF as part of its elemental analysis portfolio, providing high spectral resolution by dispersing x-rays by wavelength for more precise elemental separation.
- The XRF-1800 sequential WDXRF model supports mapping and film thickness evaluation, and uses a 4 kW thin-window X-ray tube to boost sensitivity for light elements.



Optical Emission Spectroscopy (OES / ICP-OES)

- Shimadzu treats OES (i.e. ICP-OES) as a core technique in its elemental analysis suite for simultaneous multi-element emission measurement.
- Using a spectrometer that splits light in two dimensions onto a CCD chip enables fast throughput and minimizes spectral interferences via increased resolution.





METTLER TOLEDO

Automated Lab Reactors In-Situ Analysis, & Modeling Software

Mettler Toledo AutoChem

Instruments for Chemical Synthesis, and R&D

Particle Size Analyzers

- The particle size analyzers provide inline measurement of particle size, shape, and count during processes.
- Their measurement range spans 0.5 μm to 2 mm, covering fine particles to coarse suspensions.



FTIR and Raman Spectrometers

- ReactIR and ReactRaman spectrometers are in-situ tools that monitor reaction progress by measuring molecular changes during the reaction.
- They provide real-time spectral data on molecular structure, composition, and kinetics directly within the process medium.



Chemical Synthesis Reactors

- The EasyMax and OptiMax reactors are automated platforms that execute reaction recipes with precise control over temperature, stirring, dosing, and data collection.
- They support reaction volumes from about 1 mL up to 1 L and temperature ranges from $-90\text{ }^{\circ}\text{C}$ to $180\text{ }^{\circ}\text{C}$, enabling broad synthetic chemistry conditions.



Online HPLC Analysis with DirectInject-LC

- The DirectInject-LC system converts conventional HPLC into an online technique, enabling near real-time reaction and crystallization monitoring.
- It performs fully automated sampling and injection, reducing manual intervention and improving data timeliness.



Mettler Toledo AutoChem

Instruments for Chemical Synthesis, and R&D

Automated Reactor Sampling System

- The EasySampler system performs automated, unattended sampling by taking reaction samples in situ, quenching them, and diluting them for offline analysis.
- It enables scheduled sampling and sampling triggered by process parameters, and is compatible with various chemistries including slurries and air-/moisture-sensitive reactions.



Reaction Calorimeters

- Reaction calorimeters quantify the heat released or absorbed by a chemical or physical reaction to monitor energetics and safety.
- The RC1mx model enables measurement of heat profiles, conversion, and heat transfer under realistic, process-like conditions.



RX-10 Reactor Control System

- The RX-10 control system automates jacketed laboratory reactors including heating, cooling, stirring, and dosing operations.
- It interfaces with third-party sensors and Process Analytical Technology (PAT) tools to capture and synchronize reaction data via a unified touchscreen controller.



iC Software Suite

- The iC software suite integrates the experimental workflow for automated reactors, enabling users to visualize, interpret, and report reaction data.
- It centralizes data capture from local instrumentation and transforms raw data into meaningful process insights for decision support.





RAININ

Pipetting 360+

**Liquid Handling
Solutions**

Liquid Handling Solutions

Pipettes

Single Channel Pipettes

- Available in both manual and electronic formats with Universal-fit or LTS tip compatibility, designed for ergonomic and durable daily use.
- Deliver precise micro- to milliliter volume transfer, with optimized mechanics for smooth operation and reduced user fatigue.



Multichannel Pipettes

- Provide consistency across 8 or 12 channels, ensuring synchronized volume delivery in plate workflows
- Offered in manual, electronic, and adjustable spacer variants to adapt to varying lab format needs.



High-throughput platforms

- Instruments like the 96-channel semi-automated systems streamline 96-/384-well plate workflows with improved speed and accuracy.
- Designed to combine efficiency and ease of use for repetitive plate-based pipetting without full robotic complexity.



Repeater pipettes

- Manual versions (AutoRep) support dosing ranges from 2 μ L up to 5 mL and allow multiple aliquots per aspiration cycle.
- Electronic types (NanoRep) enable precise, repeat non-contact dispensing down to sub-microliter volumes.



Electronic multichannel adjustable spacer pipettes

- The E4 XLS Adjustable Spacer models support three volume ranges (5-50 μ L, 20-300 μ L, 100-1200 μ L).
- They allow continuous nozzle spacing adjustment to transition between tubes and plate formats efficiently.



Liquid Handling Solutions

Pipette Tips

- Pipette tips are disposable, form-fitting polypropylene tips used to ensure accurate and consistent micro-volume transfers in research workflows.
- They are autoclavable and chemically stable, preserving integrity in diverse solvent and buffer environments.
- Filtered tips are certified free of RNase, DNase, DNA, and pyrogens, and sterilized post packaging to prevent contamination.
- Low-retention tips incorporate superhydrophobic surfaces to reduce sample adherence and improve recovery of viscous or low surface tension liquids.
- Wide-orifice tips minimize shear stress and reduce flow resistance when handling delicate or viscous samples.
- Extended-length tips are designed to reach into deep, narrow vessels, enabling access in tall or narrow labware.
- Large-volume tips (10 mL – 20 mL) with macro FinePoint geometry provide accurate dispensing of bulk liquids.
- Positive displacement syringe or capillary tips suit viscous, volatile, or high-density liquids by eliminating air gap effects.
- ShaftGard 10 µL tips wrap the pipette's ejector and shaft to guard against cross-contamination in critical applications.
- Rainin tips undergo continuous quality control testing to meet rigorous cleanliness and physical specification standards.



Liquid Handling Solutions

Semi-Automated Pipetting Systems

- The high-throughput platform line comprises semi-automated 96-channel pipetting systems tailored for 96- and 384-well workflows.
- The BenchSmart 96 system supports three quick-change pipetting heads covering volumes from 0.5 μ L to 1 mL.
- The MicroPro 96-channel system features "Pipetting Depth Recall" to maintain consistent tip immersion levels across wells.
- BenchSmart's interface offers touchscreen control of aspiration, dispensing, tip loading, and ejection.
- BenchSmart supports multiple pipetting modes including basic, dilute, multi-dispense, reverse, volume sequencing, mixing, and cycle count.
- Its four-plate layout is designed to minimize tip or reservoir swaps, streamlining multi-step protocols.
- The BenchSmart software allows user accounts, password protection, mode presets, and protocol memory for reproducible workflows.
- MicroPro is among the smallest 96-channel pipettors on the market, optimizing use of bench or biosafety cabinet space.
- MicroPro's precision specs include a volume range of 2–20 μ L, with accuracy and precision designed to stay within low percentage error tolerances.
- Pipette tips designed for these systems use Rainin BioClean LTS technology, compatible with semi-automated pipetting performance requirements.



Liquid Handling Solutions

Pipette Management

- Pipette Management includes SmartCheck™, a tool that verifies pipette performance in less than 60 seconds.
- SmartCheck measures dispensed volume with three repeats and provides a pass/fail result against pipette tolerances.
- It works with any pipette brand dispensing between 10 µL and 1,000 µL, including individual channels of multichannel pipettes.
- PipetteX™ software automates pipette tracking, usage monitoring, and data collection for asset management.
- PipetteX is brand-agnostic, supporting pipettes from different manufacturers.
- SmartStand serves as a docking and charging station, keeping pipettes organized and ready.
- The system ensures audit readiness by maintaining detailed logs of usage, verification, and calibration.
- Regular SmartCheck use helps identify out-of-tolerance pipettes before critical experiments.
- PipetteX allows scheduling of service, calibration, and maintenance across large pipette fleets.
- Together, SmartCheck, PipetteX, and SmartStand provide a complete life-cycle management solution for pipettes.





 **FEDEGARI⁺**
AUTOKLAVEN AG

Microbiology Lab Solutions

Microbiology Lab Solutions

Sterilizers and Washers

FVG – VERTICAL LAB STERILIZER

- Equipped with an integrated steam generator and automatic water feed pump, enabling the sterilization under saturated-steam conditions.
- Features chamber volumes of 50 L (FVG1), 75 L (FVG2) and 140 L (FVG3), with chamber and lid constructed of 316L stainless steel with mirror-polished sanitary finish, operating up to 3.5 bar g pressure and 140 °C temperature.
- Includes a horizontal swivelling lid with pneumatic "rotate-and-seal" gasket, a heat-recovery system, and a TSC 09 microprocessor controller.



FVA/A1 – VERTICAL LAB STERILIZER

- Designed for demanding applications (food, bio-pharma, cosmetics, microbiology, packaging) with chamber capacities of 75 L, 140 L and 188 L, built with 316L stainless steel chamber and lid.
- Features an automatic vertical sterilizer configuration with modular construction, a patented pneumatic seal for the horizontal swivelling lid.
- Employs the DCS20 process controller allowing full programmability (30 customizable cycles), Ethernet interface for remote monitoring, user-friendly display positioning.



FOB – BENCHTOP LAB STERILIZER

- Benchtop series offering four chamber dimension options: 47 L (FOB2-TS single door), 75 L (FOB2S-TS double door), 90 L (FOB3-TS single door), 122 L (FOB3S-TS double door), enabling flexibility for lab environments.
- Construction uses 316L stainless steel for chamber, pneumatic valves and hydraulic components with electropolished finish; features patented pneumatic gasket for door seal and optional safety device to prevent door opening under unsafe conditions.



Microbiology Lab Solutions

Sterilizers and Washers

FOB4 – STAND-ALONE LAB STERILIZER

- Offers larger capacity stand-alone configuration with chamber volumes of 147 L (FOB4-TS single vertical sliding door), 210 L (FOB4S-TS), and 226 L (FOB4L) with double vertical sliding door for pass-through applications.
- Internal 316L stainless steel plates serve as a heat-exchanger system for steam pre-heating and chamber cooling (via cold softened water).
- Built-in safety features such as a thermal blocking system to prevent door opening under hazardous conditions, and control via a DCS 20 process controller supporting 30 customizable cycles in a multi-user environment.



FOB5 – STAND-ALONE LAB STERILIZER

- Designed for large-volume sterilization, with chamber volumes from 362 L up to 729 L (various configurations) and single or double vertical sliding doors.
- Features two high-efficiency internal 316L stainless steel plates functioning as a heat-exchanger system for steam pre-heating and chamber cooling.
- Equipped with the Thema4Lab process controller (GAMP5-compliant), vertical positioning of filters to avoid frequent rupture, and full accessibility to technical area from front/lateral.



FGW – LAB GLASSWARE WASHER

- Uses a dedicated steam generator to enhance washing performance of greasy or sticky soils; steam penetrates hard-to-reach areas and reduces detergent and water consumption per cycle.
- Equipped with a conductivity meter on the drain line to monitor water purity and terminate the process automatically when the set-point is reached, minimizing utility consumption.





 **BINDER**

**Microbiology
Lab Solutions**

Microbiology Lab Solutions

Incubation and Plant Growth

CO₂ incubators

- Temperature range: from ambient +4 °C (or +6 °C) up to +50 °C; humidity up to ~90-95 % RH; CO₂ control range 0–20 vol. % with IR sensor technology.
- Features hot-air sterilisation up to +180 °C, seamless stainless-steel deep-drawn inner chamber, double-pan humidification with condensation-protection, and USB/ethernet data logging.



Cooling incubators

- Temperature range: from +4 °C (or 0 °C) up to +100 °C (or higher) using compressor or Peltier cooling; APT.line™ pre-heating chamber technology ensures uniformity (e.g., 0.3 K at 37 °C).
- Additional features: adjustable fan speed, inner door made of safety-glass, class 3.1 independent temperature safety device (DIN 12880) with visual/ acoustic alarm, USB data interface.



Standard incubators

- Temperature range from ambient +5 °C up to +100 °C (or specific models +30 °C to +70 °C) with convection type options.
- Convection and control features: adjustable exhaust-air flap, controller with timer functions, inner door of tempered safety glass, class 3.1 independent temperature safety device per DIN 12880.



Drying and heating chambers

- Situated in gravity convection or forced convection configurations (Series ED, FD, FED etc.), offering temperature ranges from ambient +5 °C (or +7 °C above) up to +250–300 °C, with homogeneous temperature distribution via APT.line™.
- Equipped with USB or Ethernet connectivity for data logging, intuitive controllers (LCD display) and energy-efficient design.



Microbiology Lab Solutions

ULT STORAGE

Ultra-low temperature freezers

- Temperature range: -90°C to -40°C , enabled via a powerful cascade compressor cooling unit and climate-neutral refrigerants R-290 and R-170.
- Thermal insulation uses long-life vacuum insulation panels (VIPs), and interior components (chamber, shelves, inner doors) are made entirely of stainless steel, rust-proof and durable.
- Energy efficiency: energy consumption at set-point -80°C and ambient temperature $\sim 21^{\circ}\text{C}$ is approx. 7.9 kWh/day for the UF V 500 model; sound pressure level ~ 47 dB(A) at normal operation.
- Safety and monitoring features include zero-voltage alarm contact for external alarm systems, Ethernet interface and USB data-logger for exporting measured values in open format; two $\varnothing 28$ mm access ports at rear.
- Mechanical design: ergonomic door handle, innovative door gasket concept to reduce ice build-up, optionally water-cooled versions available, and permitted load per compartment about 50 kg (110 lbs) with standard three stainless-steel shelves (max up to 13).





INTEGRA

Microbiology Lab Solutions

Microbiology Lab Solutions

Media Preparation and Filling

MEDIACLAVE 10/3 (Media sterilizer) and MEDIAJET (Petri dish filler)

- The MEDIACLAVE range covers two capacities: the "10" model supports 1–10 L medium volume, and the "30" model supports 3–30 L volume.
- In the MEDIACLAVE, a magnetic stirrer offers selectable speeds of 50–200 rpm and reversible rotation direction to ensure homogeneous mixing across a wide viscosity range.
- The MEDIACLAVE supports sterilization temperature range from 30 °C up to 122 °C with dispensing temperature down to ~20 °C, and a typical full cycle (for 15 min sterilisation) takes ~65–75 minutes depending on model.
- For the MEDIAJET Petri-dish filler: dosing range per dish is 1.0 mL to 99.9 mL; dosing reproducibility approx. 1 % (at 15 mL); maximum dosing rate 500 mL/min.
- The MEDIAJET supports a standard filling rate of about 900 dishes per hour (up to 15 mL) and a turbo mode reaching ~1,100 dishes per hour (up to 24 mL).
- MEDIAJET accommodates Petri-dish diameters Ø 90 mm (standard) and the "vario" version supports Ø 90, Ø 60 and Ø 35 mm dishes; the carousel capacities are 360 or 540 dishes depending on model.
- The MEDIACLAVE provides process documentation and validation: it records digital log files with electronic signatures (21 CFR Part 11 / EU GMP Annex 11), and features USB or printer output for archiving.
- The MEDIAJET features a UV-C lamp (≈ 2.1 W at 253.7 nm) spanning the filling rotor for enhanced bactericidal activity and clean environment.



Microbiology Lab Solutions

Aspiration Systems

VACUSAFE (Safe-Aspiration System)

- Combines an integrated vacuum pump, collection bottle, overflow protection and hydrophobic filters (0.45 µm or 0.2 µm) into one closed aspiration system.
- Vacuum regulation knob and built-in level sensor detect when the collection bottle is full, automatically shut off the pump and alarm.
- Compatible for use in BSL-1 to BSL-3 laboratories, with self-closing connectors, shatter-proof bottle, low noise (< 50 dB(A)).



VACUSIP (Portable Aspiration System)

- A compact, bench-top aspiration system with an integrated silent vacuum pump, capable of operating without an external vacuum source.
- Achieves vacuum of -250 mbar ±20%, liquid flow of 2.3 mL/s (with 40 mm stainless steel tip), noise emission < 50 dB(A) at 1 m, and supports seating on any bench.
- Equipped with hydrophobic filter for aerosol protection, all liquid-contacting parts are autoclavable, and hand-operator includes pressure-sensitive flow regulation.



VACUBOY (Vacuum Hand Operator)

- Hand-held vacuum aspiration tool that connects to any vacuum source via silicone tubing and accepts a wide range of adapters (constituent multi-channel adapters, Pasteur pipette adapters, disposable tip ejectors).
- Ergonomic touch-sensitive button on the hand operator allows precise vacuum regulation and smooth control of liquid aspiration; equipped with anti-drip system.
- All adapters and hand operator components are autoclavable and designed for safe use with bio-hazardous liquids; system supports integration with the VACUSAFE collection system.



Microbiology Lab Solutions

Microplate Dispenser

WELLJET Reagent Dispenser

- Volume dispensing range spans 0.5 μL to 9,999 μL , enabling a wide spectrum from very small to moderate-volume reagent aliquoting.
- Compatible with multiple micro-plate formats: 6, 12, 24, 48, 96, 384 and 1536 wells (both shallow and deep versions); supports plate heights of 5–64 mm (manual mode) and 9–25 mm (stacker mode).
- Physical and electrical specs: Dimensions for dispenser unit are 20 × 46 × 29 cm (W×D×H), weight approximately 8.8 kg, mains input 100–240 VAC, 50/60 Hz, power consumption ~100 W, noise emission <60 dBA.
- User interface and integration: High-resolution 17.8 cm (7 ") touchscreen, Ethernet interface with API commands available, optical sensor detection method, and non-contact dispensing technology.



Peristaltic Pump

DOSE IT Peristaltic Pump

- Dose volume and flow rate: Capable of dispensing from 0.1 mL up to 9,999 mL, with flow rate range approximately 0.6 mL/min up to 5 L/min, depending on tubing diameter.
- Tubing compatibility: Accepts silicone tubing with an inner diameter range from 1 mm to 8 mm, enabling broad flexibility in volume, speed and application.
- Physical and interface specifications: Dimensions ~203 × 210 × 191 mm (H×W×D), weight ~3.5 kg, interface includes 2× RS-232 ports, input voltage 100–240 VAC, 50/60 Hz.
- Pump head and precision features: Flip-top pump head for quick tubing exchange; with 1 mm tubing, dose volumes >0.5 mL at CV <1% and flow rates ~0.6–52 mL/min; 6 mm tubing can achieve >15 mL dose volumes with flow rates ~16–1634 mL/min.





iUL

Microbiology Testing

Microbiology Testing

Sample Preparation

Sample Preparation

- Achieves ± 0.1 g weighing accuracy, supported by an integrated high-performance balance and dual-pump system for consistent flow control.
- Delivers fast processing with dilution speeds of up to 500 mL/min, ideal for high-throughput microbiology and food testing workflows.



Innoculation

- Delivers high reproducibility with an electronically regulated pump system that ensures exact deposition of 50–1000 μ L sample volumes across the plate.
- Achieves accurate CFU enumeration with its three plating modes (Constant, Exponential, and Independent), optimized for food, cosmetic, clinical, and environmental microbiology labs.



Colony Counting & Zone Reading

- Equipped with a high-resolution 5-megapixel camera and full-spectrum LED dome illumination, eliminating shadows and ensuring uniform imaging across all media types.
- Utilizes advanced AI-driven image analysis capable of detecting colonies as small as 0.05 mm, with automatic differentiation of colors, shapes, and densities for accurate CFU counting.



Slide Staining

- Processes up to 20 slides per run across 10 reagent stations + 1 drying station, enabling fully programmable staining workflows.
- Uses a robotic arm with precise XYZ motion to ensure consistent immersion time and reproducible staining across histology, cytology, and microbiology protocols.
- Built with sealed reagent tanks (300 mL each) and a controlled agitation system, reducing cross-contamination while maintaining homogeneous staining quality.





PHARMA • TEST

Testing Instruments

Testing Instruments

Galenic Instruments

Tablet Disintegration Testing

- Instruments are fully compliant with USP <701/2040>, EP <2.9.1/2.9.1.2> (and equivalents) and support A-type or B-type baskets for regular or larger samples.
- Drive mechanism uses a 24 V DC motor that moves the basket up/down by 55 mm at 30 strokes/min, with automatic stroke-rate adjustment every two seconds.
- Housing and construction: units feature stainless steel housing for GMP compliance and include heating baths with safety sensors for temperature control and over-temperature protection.



Suppository Testing

- Designed to test disintegration/time to melt (softening) of suppositories and pessaries: e.g., the PTS 3E tests three samples simultaneously with pre-set test time from 1 minute to 10 hours.
- Includes sample basket rotation: for suppositories, the basket automatically turns 180° at defined intervals in a heated water bath ($\approx 37^{\circ}\text{C}$) to meet EP monograph requirements.
- Sample bath and basket system designed for easy removal for cleaning; heater and pump system engineered to avoid contamination from fat or active material intrusion.



Tablet Hardness Testing

- These instruments are used for measuring breaking force and structural integrity of tablets per USP <1217> and EP <2.9.8> requirements.
- Dual mode options: models support either linear-force increase or linear-speed increase, with user selectable modes for consistent results and calibration validation.
- Calibration/validation: force sensors can be statically calibrated across full measuring range using traceable counterweights.



Testing Instruments

Galenic Instruments

Ampoule Testing

- Instruments (e.g., PTBA 211E) test the breakpoint/hardness of empty ampoules in line during production in full compliance with DIN/ISO 9187 standards.
- Designed to ensure no glass particle contamination upon opening by checking ampoule integrity; suitable for pharmaceutical QC of ampoule production.



Tablet Friability Testing

- Measures durability of tablets during packing, transit and handling by tumbling them in a drum with a baffle; compliant with USP <1216>, EP <2.9.7> and JP <14> standards.
- Drum configurations: single-drum (PTF 100), double-drum (PTF 200), up to six-drum (PTF 600) models available, with automated sample discharge and balance connectivity.



Powder Testing

- Instruments test bulk solids and granules for physical parameters such as flowability, tap density, apparent density and bulk volume; used in formulation and QC of powders.
- Examples include Scott volumeter for bulk density (PT-SV110) and manual powder flowability and angle of repose tester (PTG-M100).



Leak Testing

- The PT-LT100 (vacuum leak testing instrument) tests integrity of packaging such as tablet strips, blisters, small bottles by placing sample into a desiccator, applying vacuum and immersion in dye to detect leaks per USP <1146>.
- Sample performance: packaging should maintain shape under vacuum; then immersion in coloured dye with venting will reveal leak paths as dye penetration indicates integrity failure.



Testing Instruments

Dissolution Testing

Tablet Dissolution Testing Instruments

- All instruments in this category are fully compliant with USP and EP requirements; they employ the "MonoShaft™" tool system and include a full set of dissolution vessels and USP Apparatus 2 paddles.
- Models cover a range of station counts and configurations (e.g., 6-station, 8-station, 12-station, 14+2-station systems) to accommodate method development, biowaiver studies, and comparative tests.
- Some instruments include independent stirring speed control per station (e.g., the 6-station model with individual stirring speed control) for research & development flexibility.
- Specific models incorporate features such as "media addition stations" for delayed-release dosage forms to support USP/EP monographs for modified release.



Offline Automated Dissolution Systems

- These semi-automated systems (e.g., DFC-series) consist of a dissolution bath, a pump and a fraction collector; they automate the sampling process at pre-programmed times.
- Sampling is performed via a PT-SP syringe pump, peristaltic pump or valve-less piston pump and the systems do not require an external PC software to initiate the sampling.
- Some systems (e.g., the DSR-M sampling robot) offer optional features like automatic media refill and dilution for increased flexibility and throughput.
- Vessel centering, full PTFE-tubing installation and either in-situ sampling probes or auto-sampling systems are included to ensure reproducible and clean sampling.



Testing Instruments

Dissolution Testing

Online Automated Dissolution Systems

- The “closed-loop” online systems (e.g., ADS-L series) integrate the dissolution bath, UV/VIS spectrometer, multi-channel pump and software (WinDiss ARGUS).
- In these systems, the sample media is circulated in a closed loop, meaning no sample volume loss over the time of the test, which improves consistency and compliance.
- Sampling probes may include in-line filters to prevent undissolved particles entering the measurement cells, and the systems support simultaneous measurement of all vessels to meet USP time requirements.
- The software controlling these systems is 21 CFR Part 11 compliant, enabling secure data handling, audit trail and integration with spectrometer and hardware components.



Media Preparation

- The PT-DDS4 media preparation and degassing system provides a combination of de-aeration, pre-heating of media to target temperatures (e.g., ~37 °C), and precise gravimetric dosing of media volumes.
- Dosing range is adjustable: the system can dispense from ~250 g to 5,000 g of medium with an accuracy of $\pm 0.5\%$ (max ± 1 mL), and temperature control from ~30 °C to 50 °C with ± 0.5 °C accuracy.
- The system supports handling of foaming media (e.g., SDS solutions) via a curved inlet tube option to direct medium flow along the tank wall and reduce foam build-up during degassing.
- Large-capacity heated/de-aerated tank (~24 L) supports pre-heating and degassing of sufficient media to feed multiple vessels or multiple runs, reducing startup time for dissolution baths.





PHARMAG

**Testing
Instruments**

Testing Instruments

Pilot Plant and small scale production

Pilot Plant Equipment

- The Pilot Plant System is designed for new-product development and small-batch production, using a universal motor drive (UAM) with standardized attachment flange.
- The UAM drive has a continuously adjustable speed range of 40-400 rpm, a 700 W motor, and stores up to 10 operating procedures in its menu-driven user screen.
- Contact parts and accessories (mixers, blenders, filling/dosing units) are constructed of GMP-compliant materials and are suitable for applications in pharmaceuticals, cosmetics, fine chemicals and educational settings.



Mini Tabletting Machines

- The MiniPress II (fully automated rotary tablet press) supports both gravity and force feeder systems, features pre-compression up to 20 kN and main compression up to 60 kN, and meets GMP design standards.
- Tooling options include mono-tooling ("B", "D", "BB") and multi-tooling configurations, with up to 12 stations and production rates up to ~15,000 tablets/h.
- Contact parts are L316 stainless steel, turret and cam-tracks are ELNP-coated (optional L316 SS turret), and the unit includes overload protection, anti-vibration pads and safety sensors.



Mini Capsulation

- The MiniCap fully-automated capsule filling machine is bench-top size, uses PLC controls, and is designed for powder and pellet filling of hard gelatin capsules.
- It supports capsule sizes 00, 0, 1, 2, 3 and 4, with a production rate up to ~3,000 capsules/hour under specified conditions.
- The machine uses GMP-compliant contact parts (stainless steel), includes safety features (emergency stop, front panel controls, hinged doors with safety interlock).





Testing Instruments

Testing Instruments

Portable Material Identification

Progeny handheld Raman spectrometer

- Uses a 1064 nm excitation laser to reduce fluorescence interference and enable analysis of colored, impure, or packaged samples.
- Spectral range covers approximately 200–2500 cm^{-1} , allowing comprehensive Raman fingerprinting for a wide range of materials.
- Spectral resolution is approximately 8–11 cm^{-1} (FWHM) in typical configurations, enabling the discrimination of subtle spectral differences among similar compounds.
- Adjustable laser output power from approximately 30–490 mW (or similar range) and exposure times from about 5 ms to 30 s to accommodate sample variety and optimize signal.
- Rugged handheld design weighing approximately 1.6 kg (3.5 lbs) and sized about 29.9 cm × 8.1 cm × 7.4 cm, with IP-68 rating for field or industrial use.
- Touch-screen user interface, smartphone-inspired, with softkeys and barcode scanner/camera integration for streamlined PASS/FAIL workflows and regulatory traceability.
- Connectivity options include USB and WiFi (and in some configurations wireless data transfer or LIMS integration) plus docking station support for charging and data synchronization.
- Designed for regulatory compliance: supports digital signatures, IQ/OQ/PQ protocols, and meets standards such as 21 CFR Part 11, FDA 1040, USP/EP for material identification workflows.





Testing Instruments

Testing Instruments

Cap Testing

Cap Torque Test

- Offers a full range of closure torque testing solutions—from manual handheld units to fully automatic torque testers designed for child-resistant and standard closures.
- Automatic models (e.g., ST-LAB6/7) include features such as programmable top-load force control, release torque testing without breaking seal integrity, and application angle measurement.
- Desktop and wireless models support quick-lock platforms, Bluetooth connectivity to smartphones/tablets, and mobile HMI displays for dose/torque measurement.



Capping Machine Test

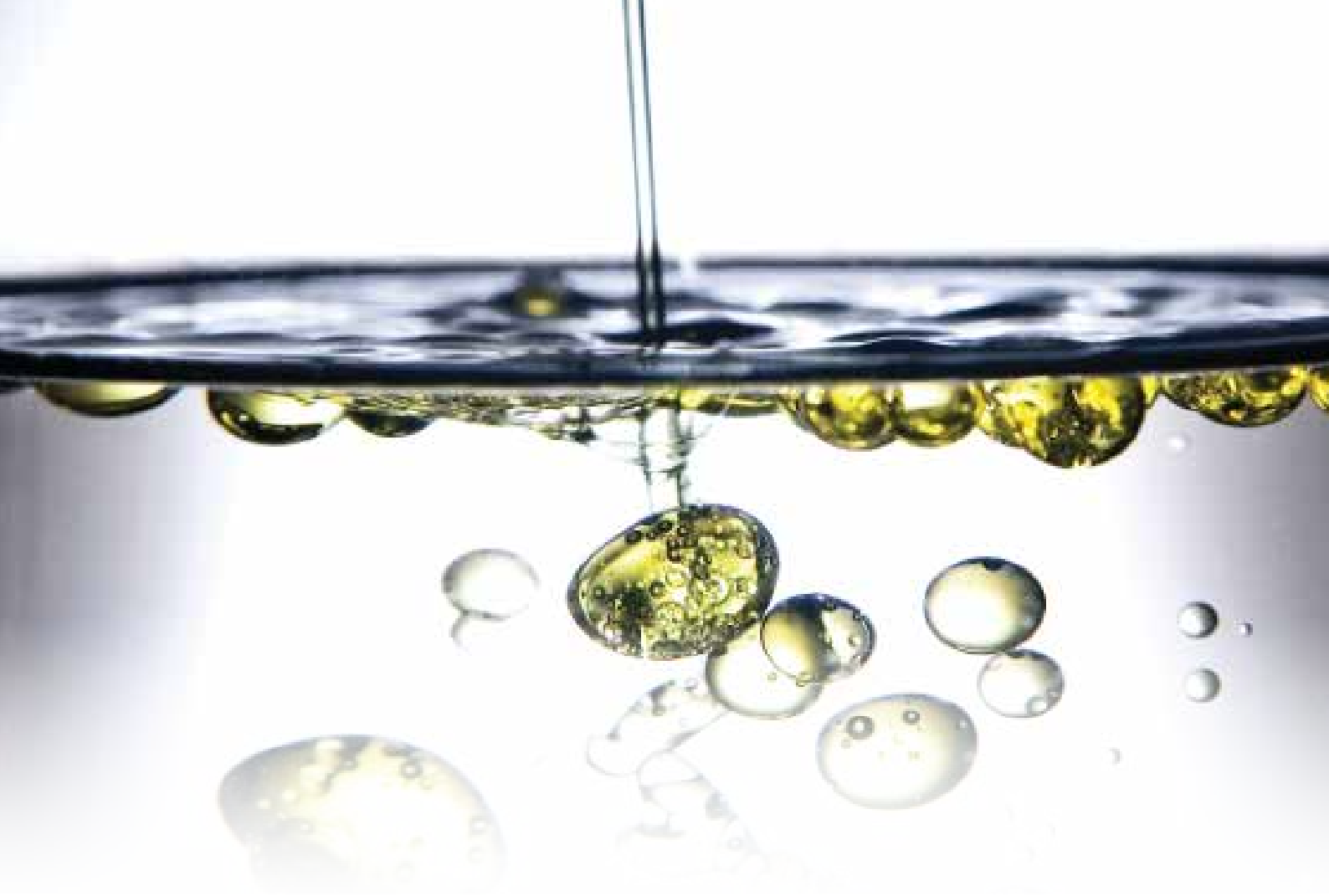
- Supports dynamic in-line testing of capping machines including closure torque, capper chuck torque, top-load force testing and spring-load evaluation on crown corks, ROPP and crimp capping machines.
- Smart Bottle modules (e.g., SB-T, SB-F, SB-TF) permit wireless monitoring of torque/time and force/time on running production lines without stopping the capping machine.
- Interchangeable neck thread fitments and dummy bottles for accommodating different container sizes/shapes enable flexible integration into various capping lines.



Smart Load Cells

- Wireless Bluetooth load-cell systems that convert a smartphone (Android or iOS) into a display/interface for measuring a wide range of tensions/compressions.
- Available in capacity ranges from 100 kg up to 10 tons for S-beam models, and supports specialized testers.
- Data acquisition features include measuring modes (single/double peak, continuous), wireless data transfer, graphing (torque/force vs time), high-frequency sampling, and on-device storage prior to PC export.





AVESTIN

Homogenizers & Pressure Control

Homogenizers & Pressure Control

High Pressure Homogenizers

EmulsiFlex-B15

- Capacity: 3 to 15 mL batch
- Pressure: up to 45,000 psi (3,000 bar)
- Minimum Sample Volume: 3 mL
- Power: electrical power not required
- Air: 80 to 150 psi (5 to 10 bar)
- Dimensions [W x D x H]: 11 in x 13.3 in x 27.5 in (280 mm x 335 mm x 700 mm)
- Weight: 81 lbs (37 kg)



EmulsiFlex-C3

- Capacity: 3 L/h
- Pressure: Up to 30,000 psi (2,000 bar)
- Minimum Sample Volume: 10 mL
- Power Requirements: 115/230 VAC 50/60 Hz 1 hp (0.75 kW)
- Air Requirements: 60 to 120 psi (4 to 8 bar), virtually no air consumption
- Dimensions [W x D x H]: 15 in x 24.8 in x 28.5 in (380 mm x 630 mm x 720 mm)
- Weight: 260 lbs (120 kg)



EmulsiFlex-C5

- Capacity: 1 to 5 L/h, depending on pressure and air supply
- Pressure: Up to 30,000 psi (2,000 bar)
- Minimum Sample Volume: 7 mL
- Power: Electrical power not required
- Air: 7 cfm (200 L/min) @ 120 psi (8 bar) recommended
- Dimensions [W x D x H]: 17 in x 6.3 in x 12.6 in (430 mm x 160 mm x 320 mm)
- Weight: 55 lbs (25 kg)



Homogenizers & Pressure Control

High Pressure Homogenizers

EmulsiFlex-D20

- Capacity : 20 L/h, independent of pressure
- Pressure : EF-D20A: up to 20,000 psi (1,380 bar),
EF-D20B: up to 30,000 psi (2,000 bar)
- Minimum Sample Volume : 50 mL
- Power : 380 to 500 VAC 50/60 Hz
- Air : 120 psi (8 bar) max., virtually no air consumption
- Dimensions [W x D x H] : 28 in x 24 in x 25 in (715 mm x 610 mm x 635 mm)
- Weight : 240 lbs (110 kg)



EmulsiFlex-C50

- Capacity: 15 to 50 L/h, depending on pressure and air supply
- Pressure: up to 30,000 psi (2,000 bar)
- Minimum Sample Volume: 25 mL
- Power: 100 to 240 VAC 50/60 Hz (for control panel)
- Air: 45 cfm (1,275L/min) @ 90-120 psi (6-8 bar)
- Dimensions [W x D x H]: 24 in x 21 in x 10.2 in (610 mm x 530 mm x 260 mm)
- Weight: 176 lbs (80 kg)



EmulsiFlex-C55

- Capacity: 55 L/h
- Pressure: EF-C55A: up to 20,000 psi (1,380 bar),
EF-C55B: up to 30,000 psi (2,000 bar)
- Minimum Sample Volume: 100 mL
- Power Requirements: 208/230 V, 400 V, 460/480 VAC,
575/600 VAC, 50/60 Hz
- Dimensions [W x D x H]: 26 in x 26 in x 29.5 in (660 mm
x 660 mm x 749 mm)
- Weight: 440 lbs (200 kg)



Homogenizers & Pressure Control

High Pressure Homogenizers

EmulsiFlex-C160

- Capacity: 160 L/h
- Pressure: EF-C160A: up to 20,000 psi (1,380 bar), EF-C160B: up to 30,000 psi (2,000 bar)
- Minimum Sample Volume: 250 mL
- Power: 380 to 500 VAC, 400 VAC, 460/230 VAC 50/60 Hz
- Air: 120 psi (8 bar) max., virtually no air consumption
- Dimensions [W x D x H]: 46 in x 39 in x 63 in (1,170 mm x 990 mm x 1,600 mm)
- Weight: 1,200 lbs (550 kg)



EmulsiFlex-C500 & EmulsiFlex-C1000

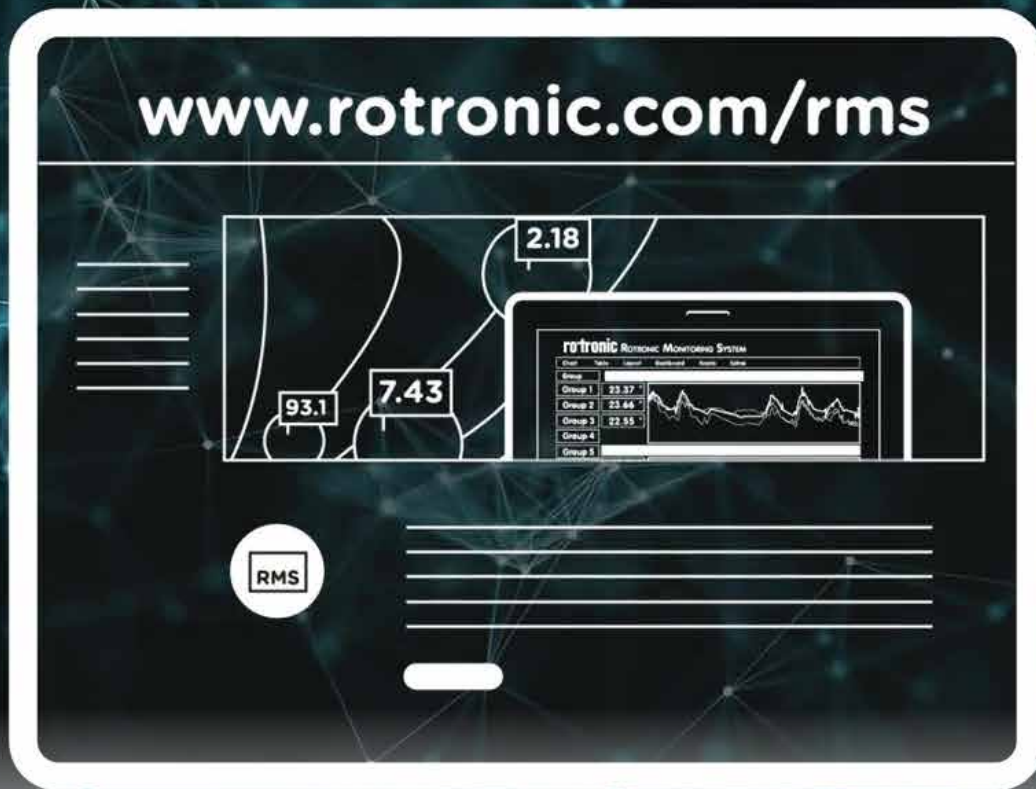
- Capacity: 500 or 1,000 L/h
- Pressure: EF-C500A/C1000A: up to 20,000 psi (1,380 bar), EF-C500B/C1000B: up to 30,000 psi (2,000 bar)
- Minimum Sample Volume: 5 L
- Power: 380 to 500 VAC 50/60 Hz
- Air: 120 psi (8 bar) max., virtually no air consumption
- Dimensions [W x D x H]: 62 in x 59 in x 62 in (1,575 mm x 1,500 mm x 1,575 mm)
- Weight: 3,300 lbs (1,500 kg)



Automatic Pressure Control with Digital Display

- This accessory can be added to any continuous Emulsiflex model without modification.
- The user sets the pressure, which will be maintained and displayed on the touch-screen HMI during the entire process time.
- The set pressure is maintained even if the product properties change during homogenization.





rotronic

MEASUREMENT SOLUTIONS
A PST BRAND

Operational Environment Monitoring Systems

Operational Environment Monitoring Systems

Monitoring and Measurements

Humidity Monitoring

- Measures relative humidity with high accuracy and fast response time.
- Enables calculation of dew/frost point and other psychrometric parameters.
- Offers analog (4–20 mA) and digital (RS-485) outputs for control systems.



Temperature Monitoring

- Uses Pt100 sensors in 3- or 4-wire configuration for precision.
- Suitable for production, storage, and transport monitoring.
- Supports continuous digital logging and calibration.



CO2 Monitoring

- Measures CO₂ alongside temperature and humidity.
- Designed for real-time monitoring under regulated conditions.
- Integrates into modular monitoring systems for IAQ and incubators.



Differential pressure Monitoring

- Uses thermal mass-flow or diaphragm sensors for high sensitivity.
- Accuracy $\pm 1\%$ FS; response time < 1 s.
- Ideal for cleanrooms and critical environments.



Operational Environment Monitoring Systems

Monitoring and Measurements

Pressure Monitoring

- Integrates process-pressure sensors into RMS.
- Supports analog (4–20 mA, 0–10 V) and digital (Modbus, OPC UA) outputs.
- Enables centralised pressure monitoring and control.



Water Activity Monitoring

- Measures free water ($a_w = 0...1$) using HygroClip sensors.
- Fast reading time (≈ 5 min) with temperature stability.
- Indicates product stability and microbial growth risk.



Dew Point Monitoring

- Calculated from humidity and temperature.
- Indicates saturation temperature of air or gas.
- Essential for preventing condensation and corrosion.



O2 Monitoring

- Uses MSRS technology for trace oxygen measurement.
- No reference air needed; barometric compensation included.
- Provides analog and RS485 Modbus outputs.



HygroGen2 - HG2-S - Humidity Generator

- The unit generates a highly stable reference environment with a standard range of 5 to 95 %RH and 0 to 60 °C.
- It features a 2-liter chamber that can calibrate up to five (or six with certain configurations) probes simultaneously and includes integrated software (HW4/HW5) (FDA 21 CFR Part 11 compliant)



Operational Environment Monitoring Systems

Rotronic Monitoring System (RMS)

- The RMS is modular hardware plus web-based software: data loggers record values from both Rotronic and third-party sensors and send to a secure database accessible via PC, Mac, tablet or smartphone.
- Supports multiple deployment modes: on-premise installation, public cloud (SaaS) and exclusive cloud versions with validated environments for regulated use.
- Designed for regulatory environments: compliant with GAMP5 (software category 4, hardware category 1), supports FDA 21 CFR Part 11, EU Annex 11 and EU Annex 15 requirements.
- Provides integration of third-party devices via analog input, MODBUS TCP, JSON API and can export data via CSV, PDF, OPC UA and MS SQL.
- Offers real-time notifications: alarms and alerts can be sent via e-mail, SMS, telephone calls; user configurable for warning vs alarm, delay, hysteresis.
- Built-in audit trail and full data integrity: system logs actions, changes, hardware replacements, calibration data; read/write access only, no delete rights in cloud-hosted mode.
- Scalable from single measurement point installations up to systems with several thousand measurement points across multiple locations.
- Supports measurement of many parameters: temperature, relative humidity, carbon dioxide, oxygen, differential pressure, analog voltages/currents and digital inputs.
- Data loggers available with PoE, 24 V supply and backup battery; wireless versions also offered to reduce cabling and risk of data loss.
- Automated and customizable reporting: functionality includes batch-release reports, deviation reports, calibration/validation reports and mapping reports (e.g., DIN 12880, NF X 15-140, USP 1079, WHO Supplement 8).

BMS and EMS

Environmental Storage

Pharmacy & Drugstore

Warehouse Monitoring

Incubators Monitoring

Cold Chains Temperature

Food and Tobacco

Cleanrooms

Cold Storage Temperature

Data Center Monitoring

Compressed Air Systems

IVF Labs



**PARTICLE
MEASURING
SYSTEMS**

a spectris company

Operational Environment Monitoring Systems

Operational Environment Monitoring Systems

Contamination Monitors

Airborne Particle Counter

- PMS offers airborne particle counters and monitors designed for cleanrooms and controlled-environments, including both remote and portable instruments.
- The airborne monitors support compliance with standards such as ISO 14644 and USP 788, providing data for clean manufacturing in semiconductor, pharma, optics and aerospace industries.
- Solutions include instruments for very small particles (down to 10 nm in some cases for chemicals or water) as part of airborne contamination monitoring systems.



Liquid Particle Counter

- PMS liquid particle counters detect and count particulate contaminants suspended in liquids (such as deionised/ultra-pure water, chemicals) for high-precision industries.
- Example: The LiQuilaz® II S Series offers optical liquid particle counting with sizing sensitivity as low as 0.2 µm and supports flows up to ~80 mL/min in batch or in-line operation.
- Another example: The Ultra DI® 20 liquid particle counter detects particles as small as 20 nm in ultrapure water systems.



Microbial Particle Counter

- PMS provides microbial contamination monitors (active air samplers) for cleanroom environments, compliant with regulations such as EU GMP Annex 1 and ISO 14698.
- Example: The BioCapt® Single-Use microbial impactor operates at flow rates of 25–50 L/min (and 100 L/min version), supports continuous viable monitoring and reduces reliance on settle plates.
- Example: The MiniCapt® Pro remote microbial air sampler features HEPA-filtered exhaust, small footprint, PoE (Power over Ethernet) connectivity, and integrates into facility monitoring systems for aseptic manufacturing.



Operational Environment Monitoring Systems

Contamination Monitors

Gas Particle Counter

- PMS offers gas particle counters and monitors for compressed gas and process gas applications, as part of their contamination monitor portfolio for air, liquid and gas.
- These gas-phase monitors integrate into clean manufacturing environments (e.g., semiconductor, photonics, aerospace) for contamination control of process gases.
- While specific models/details are less explicit on the landing page, the site confirms coverage of gas contamination monitoring solutions alongside airborne, liquid and molecular.



Molecular Particle Counter

- PMS provides airborne molecular contamination (AMC) monitors (e.g., the AirSentry® II series) that detect molecular species such as chlorides, acids, amines and ammonia in air at sensitivities down to ~70 ppt (parts per trillion).
- These monitors are available in configurations such as Point-of-Use, Multi-point Manifold and Mobile Systems.
- The AMC monitors integrate with central software platforms for data acquisition and analysis, enabling real-time actionable data in ultra-clean manufacturing environments.



Software

- PMS offers contamination-monitoring data management software that displays real-time and historical data for all PMS particle counters.
- The software supports regulatory compliance (e.g., EU GMP Annex 1, USP 788) for cleanroom contamination monitoring and provides reporting.





PARAMETER
GENERATION & CONTROL

Operational Environment Monitoring Systems

Operational Environment Control Systems

Walk-In Stability

Parameter Humidity Control Rooms

- Temperature range from -30 °C to +60 °C, with humidity control from 10 % to 90 % RH (limited by a 5°C dewpoint).
 - Relative humidity constancy of approximately ± 0.5 % RH, and uniformity of ± 0.5 % at specified conditions.
 - Modular insulated panel construction, factory-tested prior to shipment for temperature- and humidity-controlled performance.
-

Parameter Cold Rooms & Freezers

- Cold Rooms: Designed with a split-system refrigeration loop (evaporator + condenser + control loop) to reliably maintain temperatures above 2 °C while preventing coil freeze via auxiliary surface control loops.
- Freezers: Split-system design engineered to maintain freezing conditions down to -30 °C, with "need to defrost" smart cycle control for efficiency.
- Uniformity and constancy (Freezers): Temperature uniformity and constancy of about ± 0.5 °C even during defrost cycles; modular insulated panels; factory tested.



Operational Environment Control Systems

Walk-In Stability

Horizontal Conditioners

- RH (relative humidity) control constancy of $\pm 0.5\%$ for models such as the 800-1,200 CFM unit.
- Temperature control constancy of $\pm 0.1\text{ }^{\circ}\text{C}$ for the 800-1,200 CFM model.
- Relative humidity uniformity of $\pm 0.5\%$ in the same 800-1,200 CFM model.
- Built throughout with 316 stainless steel construction.
- Utility requirement example: For the 800-1,200 CFM model, domestic 208/230 V, 3-Phase, 60 Hz, 39 FLA and 24.4 RLA.
- Dimensions & weight example: For the 800-1,200 CFM model: 80 wide \times 49 deep \times 43 high, weight 1,300 lbs; shipping weight ~1,500 lbs.
- Maximum enclosure size for that model: 2,800 cu.ft; and maximum room size (with 8-foot ceiling) up to 16 \times 22 (subject to caveats).



Vertical Conditioners

- RH control constancy of $\pm 0.5\%$ for the 800-1,200 CFM vertical model.
- Temperature control constancy of $\pm 0.1\text{ }^{\circ}\text{C}$ for the same model.
- Relative humidity uniformity of $\pm 0.5\%$ for the same model.
- Built with 316 stainless steel construction throughout the chamber.
- Utility requirement example: Domestic 208/230 V, 3-Phase, 60 Hz, 35.5 FLA and 20.7 RLA.
- Dimensions & weight example: 33 wide \times 42 deep \times 96 high; weight ~1,200 lbs; shipping weight ~1,400 lbs.
- Maximum enclosure size for that model: 2,800 cu.ft; maximum room size (with 8-foot ceiling) up to 16 \times 22 (subject to ambient/heat-load/makeup-air conditions).





Operational Environment Control Systems

Operational Environment Control Systems

Standard incubation and Plant Growth

Cooling incubators

- Temperature range: from +4 °C (or 0 °C) up to +100 °C (or higher) using compressor or Peltier cooling; APT.line™ pre-heating chamber technology ensures uniformity (e.g., 0.3 K at 37 °C).
- Additional features: adjustable fan speed, inner door made of safety-glass, class 3.1 independent temperature safety device (DIN 12880) with visual/ acoustic alarm, USB data interface.



Standard incubators

- Temperature range from ambient +5 °C up to +100 °C (or specific models +30 °C to +70 °C) with convection type options.
- Convection and control features: adjustable exhaust-air flap, controller with timer functions, inner door of tempered safety glass, class 3.1 independent temperature safety device per DIN 12880.



Growth chambers

- Provide defined climate conditions with temperature and humidity control plus LED lighting modules for plant growth; e.g., temperature range 10 °C to 50 °C (KBF series) or up to +50 °C with humidity 10-90 % RH (KBF PRO series).
- Modular design: basic units (climate chambers) can be retrofitted with LED plant-light modules (16 strip-lights, warm/cool white + dark red phytochrome channel) and optional CO₂ gassing (0.05–1 vol. % CO₂).



Operational Environment Control Systems

Drying and Tempering

Safety drying chambers

- Safety concept meets the DIN EN 1539 standard, with replaceable fresh-air cartridges and symmetrical airflow to handle solvent-containing specimens.
- Temperature range from ambient +10 °C (or +10 °C above ambient) up to approx. +300 °C, with APT.line™ pre-heating chamber technology.
- Silicone- and dust-free stainless-steel inner chamber, 60 mm insulation thickness, 2-point door closure, and defined ventilation exhaust.



Drying and heating chambers

- Situated in gravity convection or forced convection configurations (Series ED, FD, FED etc.), offering temperature ranges from ambient +5 °C (or +7 °C above) up to +250–300 °C, with homogeneous temperature distribution via APT.line™.
- Equipped with USB or Ethernet connectivity for data logging, intuitive controllers (LCD display) and energy-efficient design.
- Adjustable exhaust air flap (in many models), class 2 independent adjustable temperature safety device (per DIN 12880).



Vacuum drying chambers

- Designed for gentle, residue-free drying of materials with solvents (non-flammable: Series VD; flammable: Series VDL with explosion-proof interior), with temperature range from approx. ambient +9 °C up to +220 °C.
- Features include digital display and control of both pressure and temperature, program-controlled drying monitoring with automatic ventilation at end of process, and internal data logger for open-format export (USB/Ethernet).
- Excellent heat transfer via large thermal conducting plates and patented expansion racks, stainless-steel interior.



Operational Environment Control Systems

Environmental Simulation

Constant climate chambers

- Temperature range 0 °C to +70 °C and humidity range 10 % to 80 % RH for the standard KBF series; expanded models (KBF PRO) achieve -20 °C to +100 °C and 10 % to 98 % RH.
- Use of inverter-compressor cooling with climate-neutral refrigerant (R-600a) and APT.line™ pre-heating chamber technology.
- Features stainless steel interiors with telescopic racks, adjustable fan speeds, door-heating to prevent condensation, and optional light modules.



Dynamic climate chambers

- Designed for rapid temperature changes with temperature ranges from -40 °C to +180 °C, and in extended low-temperature models down to -70 °C.
- Equipped with intuitive touchscreen controllers supporting time-segment programming, real-time programming, heated viewing windows, and LED interior lighting.
- Cooling technology uses climate-neutral refrigerants (e.g., R-744) and models support external relay contacts, integrated water-tank for humidity models, and programmable condensation protection.



Walk-in-chambers

- Available in three sizes with interior volumes of 12 m³ (WIC1), 18 m³ (WIC2) and 24 m³ (WIC3); temperature range 10 °C to 50 °C, humidity range 20 % to 90 % RH, temperature accuracy ±1.5 °C, humidity accuracy ±2.5 % RH.
- The climate-generating unit is installed outside the chamber body to minimise disruption to interior conditions during service and maintenance.
- Floor-mounted chamber has lockable door with LED illumination and motion sensor, stainless-steel interior and optional accessories like heavy-duty shelving up to 11 levels, additional access ports and strip curtains.



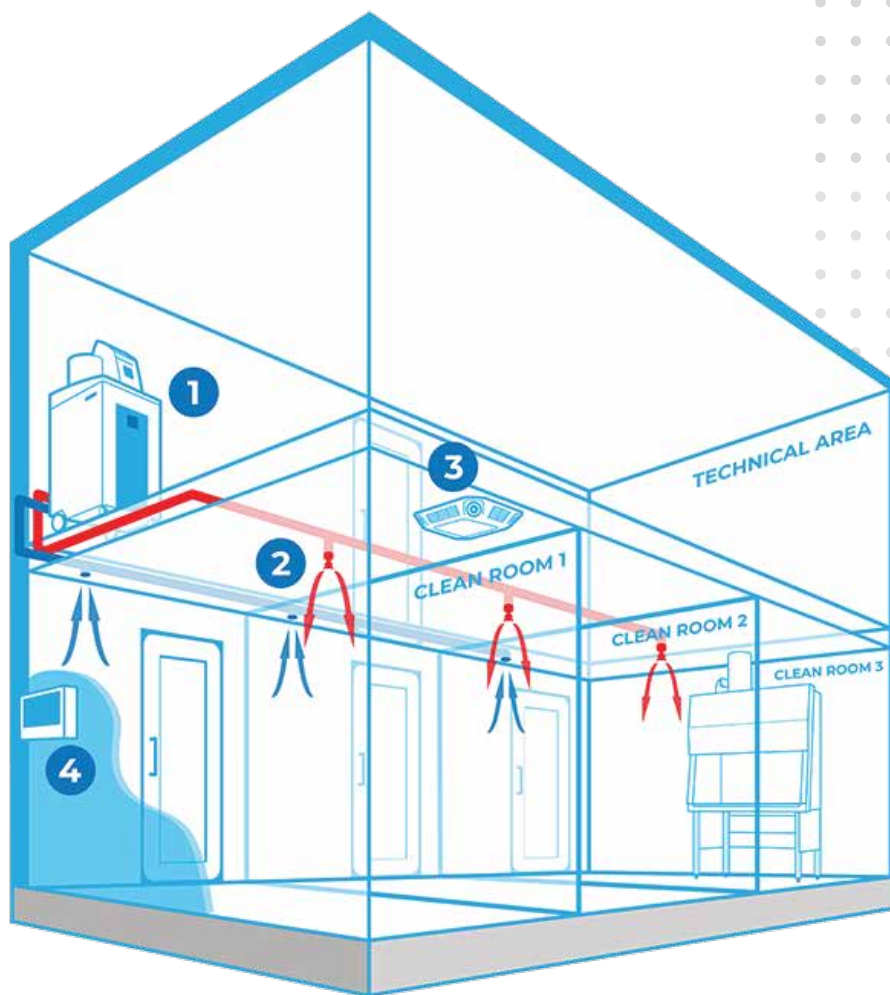
Operational Environment Control Systems

ULT STORAGE

Ultra-low temperature freezers

- Temperature range: -90°C to -40°C , enabled via a powerful cascade compressor cooling unit and climate-neutral refrigerants R-290 and R-170.
- Thermal insulation uses long-life vacuum insulation panels (VIPs), and interior components (chamber, shelves, inner doors) are made entirely of stainless steel, rust-proof and durable.
- Energy efficiency: energy consumption at set-point -80°C and ambient temperature $\sim 21^{\circ}\text{C}$ is approx. 7.9 kWh/day for the UF V 500 model; sound pressure level ~ 47 dB(A) at normal operation.
- Safety and monitoring features include zero-voltage alarm contact for external alarm systems, Ethernet interface and USB data-logger for exporting measured values in open format; two $\varnothing 28$ mm access ports at rear.
- Mechanical design: ergonomic door handle, innovative door gasket concept to reduce ice build-up, optionally water-cooled versions available, and permitted load per compartment about 50 kg (110 lbs) with standard three stainless-steel shelves (max up to 13).





Operational Environment Control Systems

Operational Environment Control Systems

Risk Reduction Solutions

Bioquell ProteQ

- Modular design tailored for room- and zone-decontamination covering areas up to 400 m³ per unit.
- Built-in aeration module included; optional wireless aeration units stored within the frame for cycle-time optimisation.
- Wireless networking and remote lectern control enable cycle monitoring outside the decontamination space.
- Dual-function system combining both vapour generation and aeration in one integrated unit.
- Validated for a 6-log sporicidal kill using Bioquell's 35% hydrogen peroxide sterilant.
- Suitable for use in both small laboratories and large biopharmaceutical manufacturing areas, including GMP/GLP cleanrooms.
- Designed for retrofit or new-install environments with minimal structural modification required.



Bioquell Qube – Pharmaceutical Isolator

- Configurable isolator platform with built-in hydrogen peroxide vapour decontamination technology achieving a validated 6-log sporicidal reduction on exposed surfaces.
- Available in 2-glove, 4-glove or 6-glove configurations with up to two material transfer ports/Rapid Transfer Ports (RTPs).
- Constructed of hard-wearing polypropylene body and 316 stainless steel floor (scratch-resistant surface) for cleanroom use.
- Decontamination cycles as short as ~20 minutes (depending on load/configuration) enabling rapid turnaround.
- Designed to install via 800 mm (32 in) door frame with no or minimal HVAC connection in positive pressure setups.
- Integrated environmental monitoring options including particle-counting (viable & non-viable) and remote data logging to support compliance (e.g., 21 CFR Part 11).



Operational Environment Control Systems

Risk Reduction Solutions

Bioquell SeQure

- Achieves validated 6-log sporicidal kill on exposed surfaces using Bioquell's 35% hydrogen peroxide sterilant (EPA Reg. No. 72372-1-86703).
- Automated, pre-programmed decontamination cycles optimized for high throughput and minimal manual setup.
- Adaptable for retrofit mounting on nearly any wall surface in either new-construction or existing installations.
- Integrates an aeration module (e.g., catalytic breakdown of hydrogen peroxide vapour) for efficient cycle termination.
- Real-time automated cycle-prediction engine assists validation and minimizes downtime.
- Suitable for viral/bacterial vector work, biocontainment units and research areas where compact footprint is required.



Bioquell L-4

- Mobile hydrogen peroxide vapour generator designed for equipment, enclosures and full-room/zone decontamination (up to ~250 m³ with optional distribution head).
- Operates at ambient (room) temperature; no extended de-humidification phase required prior to start of cycle.
- Fully validated including IQ, OQ, GCD, PQ and cycle recording (thermal printer and real-time data options) with up to 300 pre-programmed cycles stored.
- Connects to external equipment or distribution accessories (e.g., isolators, pass-throughs, freeze-dryers, incubators, rack washers) for flexible application.
- Remote start/stop and integration testing available for building management and automation systems.
- Uses Bioquell's hydrogen peroxide vapour sterilant to achieve validated bioburden reduction across all exposed surfaces.
- Compact mobile footprint enabling positioning adjacent to target area; suitable for equipment decontamination or room/zone deployment.



Operational Environment Control Systems

Risk Reduction Solutions

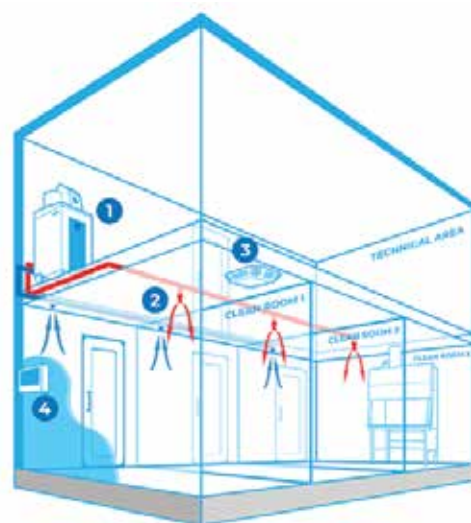
Bioquell IG-2

- Fixed, built-in hydrogen peroxide vapour generator engineered to integrate into process equipment, isolators, filling lines, transfer chambers or plant zones.
- Provides validated 6-log sporicidal kill for every exposed surface during each cycle.
- Remote-control touch-screen interface located remotely for user convenience; remote hose lengths up to 3 m for flexible placement of components.
- Custom engineering support provided to adapt the system to specific equipment/process setups, ensuring seamless inclusion in workflow.
- Integration with building management systems (BMS) and automation available to support data logging and compliance.
- Compact footprint while maintaining high capacity decontamination; designed for minimal interruption to surrounding operations.



Bioquell Integrated Building Decontamination System

- Fully integrated, facility-scale solution designed for routine or frequent decontamination of zones.
- Vapor distribution via the building's HVAC system or dedicated pipe network enables efficient delivery and evacuation of hydrogen peroxide vapour across multiple rooms.
- Reducing risks from trailing cables or door-sealing errors.
- Scalable and custom-designed to your facility; validated to achieve a 6-log bioburden elimination standard.
- Connectivity to building management systems (BMS) for monitoring, logging, automation and compliance.
- Designed for minimal workflow disruption.
- Suitable for GMP biopharmaceutical manufacturing, filling suites, biomedical facilities and biosafety/containment labs requiring routine decontamination of multiple zones.



Operational Environment Control Systems

Consumables & Related Accessories

Bioquell IG-2

- Rapid chemical indicator verifying 6-log₁₀ bioburden reduction (*G. stearothermophilus*) in rooms $\geq 10 \text{ m}^3$.
- Features reactive ink strip that changes colour on exposure, providing instant visual confirmation.



Bioquell IG-2

- Indicator card for small enclosures ($< 10 \text{ m}^3$) calibrated to 6-log₁₀ kill during H₂O₂ vapour cycles.
- Delivers immediate visual results by comparing reactive and reference ink strips after each run.



Bioquell IG-2

- Inoculated with *G. stearothermophilus* spores to verify validated 6-log₁₀ reduction performance.
- Placed at test points, exposed to vapour, then incubated to confirm complete decontamination.



Bioquell IG-2

- High-purity 35 % aqueous hydrogen peroxide formulated for Bioquell vapour systems.
- RFID-tagged bottles ensure traceability and compatibility with validated cycle parameters.



Bioquell IG-2

- Optical reader that quantifies Bioquell CI colour change and records digital results.
- Provides automatic data storage and traceable reporting of 6-log kill verification cycles.





KAYE

SUBSIDIARY OF AMPHENOL

Operational Environment Validation Systems

Operational Environment Validation Systems

Thermal Validation Systems

Wired Validation Systems

- Multi-channel wired system (up to 48 inputs) for high-precision thermal validation.
- Supports multiple thermocouple types with scan speeds of 48 channels/sec.
- Includes a dedicated console with integrated validation software and data management.



Wireless (RF) ValProbe RT System

- Real-time wireless data logging via 2.4 GHz RF link between loggers and base station.
- Measures temperature from -85°C to $+140^{\circ}\text{C}$ with sampling from 1 s upward.
- Provides live monitoring, validation software integration, and 21 CFR Part 11 compliance.



ValProbe Data Loggers Standard

- Stand-alone wireless loggers for temperature, humidity, and pressure mapping.
- Sampling interval from 1 s to 12 h with up to 10,000 data points per sensor.
- Designed for ovens, freeze-dryers, and stability chambers in regulated environments.



Real-Time Wireless

- RF loggers stream data live to a base station for continuous validation monitoring.
- Operates across -85°C to $+140^{\circ}\text{C}$ and 0–5 bar with robust dual-antenna communication.
- Ethernet connectivity and audit-trail software ensure data integrity and regulatory compliance.



Operational Environment Validation Systems

Thermal Calibration Systems

Kaye LTR/HTR Drywells

- Cover temperature ranges from $-90\text{ }^{\circ}\text{C}$ to $+420\text{ }^{\circ}\text{C}$ depending on model.
- Stability $\pm 0.01\text{ }^{\circ}\text{C}$ and uniformity $\pm 0.1\text{ }^{\circ}\text{C}$ for precise calibration.
- Support up to 48 thermocouples and operate in dry-block or liquid-bath mode.



Kaye CTR Liquid Baths

- Temperature range $-25\text{ }^{\circ}\text{C}$ to $+140\text{ }^{\circ}\text{C}$ with $0.01\text{ }^{\circ}\text{C}$ stability and $0.02\text{ }^{\circ}\text{C}$ uniformity.
- 2.5 L tank for up to 10 probes simultaneously.
- Uses compact Peltier cooling, stainless housing, and universal power input.



Kaye IRTD Temperature Standard

- Range $-196\text{ }^{\circ}\text{C}$ to $+420\text{ }^{\circ}\text{C}$ with $\pm 0.025\text{ }^{\circ}\text{C}$ accuracy and $0.001\text{ }^{\circ}\text{C}$ resolution.
- $200\text{ }\Omega$ platinum RTD in Inconel 600 sheath, 101 mm immersion depth.
- Traceable to NIST/PTB and integrates with Kaye validation systems.



Kaye Humidity Calibrator

- Generates 5–95 % RH for up to 8 probes simultaneously.
- Compact ($\approx 3.2\text{ kg}$) unit with USB data download and touch control.
- Uses dual flow-mixing for fast and stable humidity setpoints.





Operational Environment Validation Systems

Operational Environment Monitoring Systems

Photometers and Accessories

2i iProbe Plus Scanning Probe

- Large 4.3-inch colour touchscreen, compatible with existing 2i photometer base units without firmware update ("plug and play") and supports password protection/encryption for 21 CFR Part 11 compliance.
- Ergonomic handle (with finger grooves and thumb-rest), upstream/downstream/clear valve controls on the probe (patented), and a "10-second rewind" function to exclude accidental alarm events.



2i, 2i-N Aerosol Photoameter

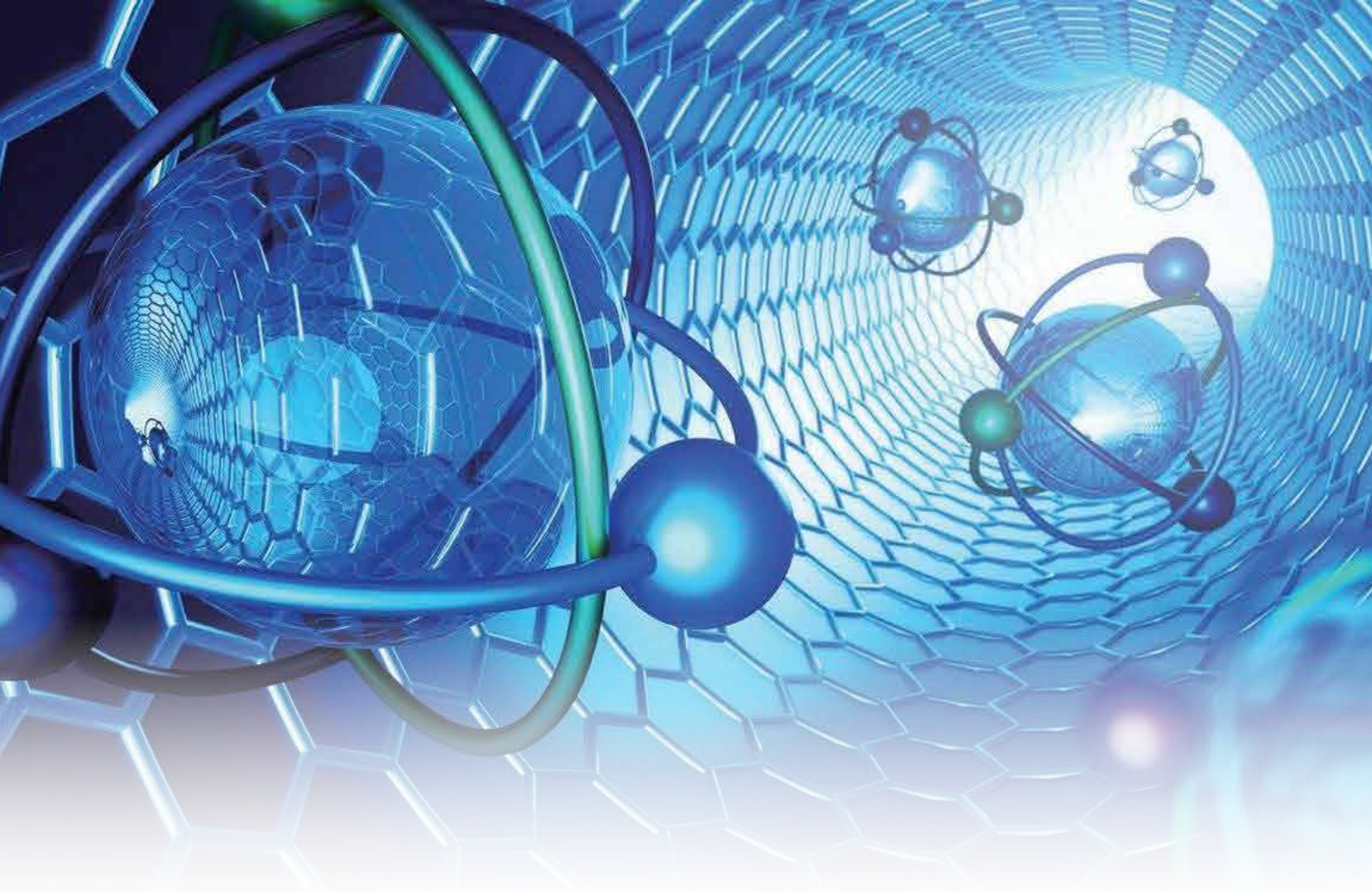
- Portable, rugged digital aerosol photometer suitable for in-situ filtration system testing; the 2i-N variant has a sealed sample train for hazardous/nuclear environments and is compatible with ASME N511 / 510 / 509 / AG-1.
- Technical specifications: size ~ 33 cm × 25.7 cm × 15.2 cm (13 in × 10.1 in × 6 in); weight ~8.6 kg (19 lb); power input 100-250 V AC, 50/60 Hz auto-adjust; flow control 1 cfm (28.3 lpm) ±5 %.
- Dynamic measurement range from 0.0001 mg/m³ (µg/l) up to 120 mg/m³; accuracy of ±1 % of readings (0.01 % to 100 %); repeatability ±0.5 % of readings >0.01 % to 100 %.



Heavy Duty Photometer Cases

- Ruggedized transport/storage cases with hard-plastic waterproof/crushproof/dustproof shell, telescoping handle and wheels, and custom foam cut-outs designed to secure the 2i photometer, generator, accessories during transport.
- Configurations include multiple sizes: e.g., part 9300258 (fits 2i + iProbe; no wheels) at 58 cm × 48 cm × 23 cm, ~4 kg empty; part 9300243 (fits 2i + iProbe + thermal printer; with wheels) at 53 cm × 62.5 cm × 33 cm, ~10 kg empty.
- Designed for "all-in-one" job-site transport: accommodates photometer, generator (5D or 4B/4BL), iProbe, thermal printer and accessories.





HORIBA
Scientific

Atomic Spectroscopy

Atomic Spectroscopy

Particle Analysis

Dynamic Light Scattering

- Determines particle size from nanometers to submicron via Brownian motion.
- Uses intensity fluctuations of scattered light to calculate hydrodynamic diameter.
- Ideal for nanoparticles, colloids, and protein solutions.



Static Light Scattering

- Measures size distribution from light intensity vs. angle using Mie theory.
- Covers nano- to millimeter-scale particles in dry or wet dispersion.
- Provides fast, high-accuracy results with adjustable optical parameters.



Molecular Weight

- Uses static light scattering (Debye plot) to determine molecular weight and A_2 .
- Applicable for polymers and macromolecules in solution.
- Often integrated with DLS or zeta systems for full molecular characterization.



Zeta Potential

- Measures surface charge via electrophoretic light scattering.
- Indicates dispersion stability and isoelectric point.
- Calculates zeta from measured mobility using standard electrokinetic models.



Atomic Spectroscopy

Particle Analysis

Image Analysis of Particles

- **Multi-Stage Digital Processing:** The analytical process fundamentally involves three steps: high-quality image acquisition, object/phase detection, and quantitative measurement for parameter extraction.
- **Wavelength-Dependent Resolution:** The effective size range for particle measurement is determined by the radiation wavelength used for imaging.
- **Acquisition Modes Define Technique:** Particle image analysis techniques are primarily differentiated by their image acquisition methodology.



Nanoparticle Tracking Analysis

- Analysis involves sequential steps: image acquisition, automated object detection (using algorithms to separate particles), and size/shape parameter extraction.
- Measurable particle size is wavelength-dependent: Optical microscopy is used for particles $> 0.5 \mu\text{m}$; electron microscopy is required for sub-micron particles.
- Techniques are defined by the acquisition method: Dynamic (particles in flow), Static (particles on a slide), or In-line (real-time process monitoring).



Centrifugal Sedimentation

- Determines size by measuring sedimentation velocity under centrifugal force.
- Uses Stokes' law for high-resolution particle distributions.
- Ideal for dense or polydisperse samples across nano- to micron-scale.



Atomic Spectroscopy

Microscopy and Imaging

Raman Microscopy

- Combines Raman spectroscopy with optical microscopy for sub-micron spatial resolution.
- Provides chemical, structural, and stress mapping in 2D and 3D.
- Non-destructive, suitable for solids, liquids, and microstructures.



Cathodoluminescence

- Detects light emitted from materials under electron-beam excitation.
- Reveals composition, band-gap, and defect distributions at high spatial resolution.
- Integrates with SEM while maintaining full imaging and analysis functions.



Atomic Force AFM-Raman

- Combines AFM topography with Raman chemical mapping on the same area.
- Enables nanoscale analysis through Tip-Enhanced Raman Spectroscopy (TERS).
- Correlates morphology, mechanical, and chemical information simultaneously.



AFM-Raman

- Combines AFM topography with Raman chemical mapping.
- Enables nanoscale resolution via tip-enhanced Raman (TERS).
- Correlates morphology, mechanical, and chemical data.
- Operates in reflection or transmission configurations.
- Suited for nanomaterials, 2D layers, and surface analysis.



Nanoparticle Tracking Analysis

- Analysis involves sequential steps: image acquisition, automated object detection.
- Measurable particle size is wavelength-dependent.
- Techniques are defined by the acquisition method: Dynamic, Static, or In-line (real-time process monitoring).



Atomic Spectroscopy

Spectroscopy

Raman Spectroscopy

- Uses inelastic light scattering to reveal molecular and structural information.
 - Provides chemical, phase, and stress mapping at submicron scale.
 - Non-destructive and suitable for solids, liquids, and gases.
-



AFM-Raman

- Combines AFM topography with Raman chemical mapping.
- Enables nanoscale resolution via tip-enhanced Raman (TERS).
- Correlates morphology, mechanical, and chemical data.
- Operates in reflection or transmission configurations.
- Suited for nanomaterials, 2D layers, and surface analysis.



Detectors

- Include CCD, EMCCD, InGaAs, PMT, and APD types for UV-IR detection.
- Support single- and multichannel configurations for spectroscopy.
- Offer high sensitivity, low noise, and cooling options.
- Enable steady-state, time-resolved, and imaging measurements.
- Integrated into HORIBA and OEM analytical instruments.





Tescan

Electron & X-ray Microscopy Solutions

Electron & X-ray Microscopy Solutions

Scanning Electron Microscopes (SEM)

Tescan VEGA

- Tungsten filament SEM with no apertures, simplifying user setup and lowering maintenance burden.
- Uses Wide Field Optics™ and 2× SEM navigation to minimize alignment overhead and speed sample observation.
- Integrates EDS directly in the interface, allowing morphology and elemental analysis in a single environment.



Tescan VEGA compact

- Compact analytical SEM with a large chamber capable of accommodating industrial-scale samples under true high vacuum.
- Employs In-Flight Beam Tracing™ for rapid beam optimization and setting of imaging conditions.
- Uses Essence™ software with EDS overlay tools to correlate morphology and composition within a unified interface.



Tescan MIRA

- FEG-SEM (Schottky source) modular platform suited for high-current, high-resolution imaging.
- Supports multiple techniques (EDS, EBSD, CL, STEM, nanoprotyping) via scalable detector integration.
- Utilizes In-Flight Beam Tracing™ and Wide Field Optics™ to accelerate beam setup and navigation.



Tescan MIRA XR

- Ultra-high-resolution (UHR) SEM platform combining BrightBeam™ optics, Wide Field Optics™, and Dual Essence™ EDS.
- Offers macro-to-nano automated navigation, beam optimization, and automated column alignment.
- Supports challenging sample types (non-conductive, outgassing) via MultiVac™ and Auto LowVac Aperture.



Electron & X-ray Microscopy Solutions

Scanning Electron Microscopes (SEM)

Tescan CLARA

- Field-free UHR SEM platform optimized for imaging delicate, magnetic, or charging samples with minimal artifacts.
- Incorporates energy-filtered, in-column multi-detector design for simultaneous topography and composition contrast in a single scan.
- Supports modular hardware and open scripting workflows for correlative and in-situ experimentation.



Tescan MAGNA

- Uses TriLens™ immersion optics to maintain sub-nanometer resolution at longer working distances and on tilted surfaces.
- Employs contrast-selective detectors (TriSE™, TriBE™) to produce clear SE/BSE contrast with minimal signal mixing.
- Enables STEM-in-SEM capability, allowing nanoscale characterization without switching instruments.



Tescan TIMA

- Automated mineralogy SEM combining high-throughput SEM-EDS with integrated mineral identification and textural analysis.
- Uses four EDS detectors and spectral summing to detect trace and low-abundance minerals.
- Offers unattended data acquisition, automated classification, and spatial linking of compositional and structural data.



Electron & X-ray Microscopy Solutions

Focused Ion Beam-Scanning Electron Microscopes (FIB-SEM)

Tescan AMBER

- Automated Ga FIB-SEM platform combining BrightBeam™ field-free SEM optics with Orange™ Ga ion beam and full automation of lamella preparation workflows (including lift-out).
- Supports both inverted and planar sample preparation, nanoprototyping, and gentle final polishing (with optional Argonne Gentle Ion Beam for < 200 eV polishing).



Tescan AMBER X

- Universal plasma FIB-SEM combining Mistral™ Xe plasma FIB with BrightBeam™ UHR SEM to handle both bulk volumetric milling and delicate TEM lamella prep.
- Capable of curtaining-free, high throughput milling with Xe while retaining Ga-level precision for sensitive sample prep.
- Facilitates complex multimodal workflows (EDS, EBSD, ToF-SIMS, Raman) in a unified instrument.



Tescan SOLARIS

- Dedicated Ga FIB-SEM configured for fully automated, high-precision TEM sample prep in semiconductor devices
- Incorporates Triglav™ SEM, AutoTEM Pro™ software, and OptiLift™ nanomanipulator for repeatable lamella preparation in planar, inverted or top-down geometries
- Offers AI-driven workflows, precise end-pointing, overnight auto-alignment, and unattended batch processing



Tescan SOLARIS X

- Plasma FIB-SEM platform for high throughput failure analysis and Ga-free sample preparation, combining Mistral™ Xe plasma FIB with UHR SEM imaging
- Provides artifact-free "TRUE X-sectioning" using Rocking Stage cross-sectioning capabilities in heterogeneous stacks and materials





INSTRON

Materials Testing Systems

Materials Testing Systems

Universal Testing Systems

6800 Series Universal Testing Systems

- Delivers force capacity from 0.02 N to 300 kN with load measurement accuracy of $\pm 0.5\%$ of reading down to 1/1000 of the load cell capacity using 2580 Series cells.
- Features such as auto-positioning, specimen protection, increased axial stiffness, collision mitigation, and compatibility with advanced accessories and automation modules.
- Supports expansion to up to 13 channels plus analog I/O and digital I/O, with removable handset controls and optional smart-close air kit for safer grip actuation.



3400 Series Universal Testing Systems

- Covers force range from 0.025 N to 300 kN, achieving $\pm 0.5\%$ accuracy down to 1/250 of load cell capacity (and $\pm 1.0\%$ down to 1/500).
- Designed for routine mechanical testing and quality control, with features such as collision mitigation, safety coaching, and optional smart-close air grip kit.
- Frame styles include single column and table models, offered in extra height variants to support testing of high elongation specimens.



Automation for Universal Testing Systems

- Provides modular or turnkey automation solutions (e.g. AT2, AT3, AT6, CT6, automated carousel, cobot integration) to automate specimen loading, test execution, and data collection.
- Designed to enhance throughput, repeatability, safety, and workflow efficiency, allowing operators to focus on analysis rather than machine operation.
- Automation modules can integrate with existing systems and accessories, supporting multiple test types (tension, compression, flexure, shear) in one workflow.



Materials Testing Systems

Universal Testing Systems

5980 Series Universal Testing Systems

- Rated for force capacity up to 600 kN, with load measurement accuracy of $\pm 0.5\%$ down to 1/1000 of load cell capacity using 2580 Series cells (and $\pm 0.4\%$ at certain ranges with other cells).
- Built for high strength material testing with increased axial stiffness, compatibility with automation and accessories, removable handset, specimen protection, and automatic gain adjustment.



Industrial Series Universal Testing Systems

- Uses hydraulic drive systems to deliver force up to 2000 kN, with testing spaces and frame stiffness suitable for large, high-strength specimens.
- Load measurement accuracy of $\pm 0.5\%$ down to 1/500 of load cell capacity, featuring specimen protection, automatic gain adjustment, removable handset for ergonomic control.
- Select frames (e.g. DX, HDX) provide dual test spaces enabling tension and compression/bending/shear testing without needing fixture changes when switching modes.



Specialty Systems

- Custom solutions engineered for application-specific requirements, such as the Curved Needle Testing System for puncture and bend testing of surgical needles per ASTM F3014.
- Customization includes frame geometry modifications, specialized safety shielding (light curtains, debris shields), high-speed frames, and tailored fixtures to accommodate unique specimen shapes or test protocols.





ECOLAB®

PROTECTING WHAT'S VITAL™

Chemicals & Consumables

Chemicals & Consumables

Life Sciences

Cleanroom Equipment and Cleaning Supplies

- Autoclavable, cleanroom-compatible mop systems and tools designed for GMP-grade application of biocides and detergents.
- Gamma-sterilized, low-lint equipment packaged in double/triple bags to support controlled-area transfer.
- Spray and mop systems engineered for efficient coverage under unidirectional airflow in aseptic areas.



Cleanroom Alcohols - Sterile Isopropyl and Ethanol

- Sterile 70% IPA and ethanol filtered to 0.2 μm and gamma-irradiated for aseptic-grade use.
- SteriShield™ bag-in-bottle system prevents back-contamination and maintains sterility during use.
- Prepared with high-purity WFI/DI water and filled in Grade-controlled cleanroom conditions.



Cleanroom Residue Removal and Detergents

- pH-neutral, low-foaming detergents formulated for safe residue removal on cleanroom surfaces.
- 0.2 μm filtered, gamma-sterilized solutions packed in cleanroom-grade, double-bagged formats.
- Low-residue quaternary formulas minimize visible residues and reduce rinse requirements.



Dry and Presaturated Wipes for Cleanrooms

- Low-lint polyester/cellulose wipes pre-saturated with sterile IPA, ethanol, or detergents.
- Triple-bagged, gamma-irradiated wipe systems suitable for Grade A/B/C cleanroom zones.
- Optimized substrate and saturation levels for consistent surface coverage and particulate control.





Chemicals & Consumables

Chemicals & Consumables

Chemicals

**Chromatography
Reagents**

**Karl Fischer
Reagents**

**Karl Fischer
Standards**

**ASTM
Products**

**PHARMACOPEIA
Products**

**Standard
Solutions**

Standards

Derivatives

Solvents

**ASTM
Products**

**PHARMACOPEIA
Products**

**Standard
Solutions**

**Inorganic
Reagents**

**Organic
Reagents**

**Volumetric
Solutions**

Indicators

Buffers





Optical Imaging

Optical Imaging

Microscopes

Inverted Microscopes

- **Live Cell Imaging & Drug Screening:** These microscopes allow for high-resolution observation of living cells through the bottom of culture vessels, making them essential for assessing cell viability and the effects of drug compounds over time.
- **High-Content Analysis (HCA):** They are often integrated into automated systems with robotic arms capturing detailed data on cellular responses in multi-well plates.



Upright Microscopes

- **Pathology & Toxicology Studies:** Standard for examining fixed tissue slides, these microscopes help researchers identify cellular changes or toxic effects caused by new drug formulations.
- **Microbial Quality Control:** They are used to identify bacterial and fungal contaminants in pharmaceutical production batches, ensuring the sterility and safety of the final product.



Polarizing Microscopes

- **API Crystallography & Polymorphism:** These systems are vital for studying the crystalline structure of Active Pharmaceutical Ingredients (APIs), as different crystal "polymorphs" can change how a drug dissolves and works in the body.
- **Contaminant Identification:** Using polarized light, lab technicians can detect and identify foreign particles that may have accidentally entered the manufacturing process.



Stereo Microscopes

- **Tablet & Packaging Inspection:** Providing a 3D view at lower magnification, these microscopes are used to inspect the physical integrity of tablets, looking for surface cracks, coating defects, or printing errors.
- **Sample Manipulation & Dissection:** With a large working distance, they allow researchers to perform delicate tasks like micro-dissections, preparing small tissue samples, or manipulating delicate drug-delivery beads under clear 3D visualization.



Taawon

- 📍 Jordan
- ☎ +962 6 5155 477/8
- 📠 +962 77 748 5466

Altayf Althahabi - TTSL

- 📍 United Arab Emirates
- ☎ +971 4 514 5813
- 📠 +971 52 575 7156

Diamond Spectrum

- 📍 Saudi Arabia
- ☎ +966 12 6919 740
- 📠 +966 12 61 62 243

Diamond Spectrum

- 📍 Bahrain
- ☎ +973 32 225 691
- 📠 +973 17 223 187

